



## **Parks & Recreation**

### **Road Tour**

**July 2018**

David Gordon, Chair  
David Malinowski, Vice Chair  
Douglas Krauss, Secretary  
Patricia Bunn, Member  
Bryan McNamara, Member  
Dennis Wysocki, Member  
Michael Brody, Member





# LOWER MAKEFIELD TOWNSHIP **Parks & Recreation**



## TABLE OF CONTENTS

Recreational Facilities .....	3
Community Park .....	3
Baseball Complex.....	6
Fred Allan Softball Complex .....	7
Macclesfield Park Map .....	9
Memorial Park .....	10
Five Mile Woods .....	13
LMT Bike Paths.....	15
Dog Park.....	17
Community Center .....	19
Snipes Farm (In Progress) .....	20
Pocket Parks.....	22
Veterans Square .....	22
Heacock Meadows .....	23
Peake Farm.....	23
Yardley Hunt.....	23
August 2017 – July 2018 Parks and Recreation Highlights .....	24



# LOWER MAKEFIELD TOWNSHIP Parks & Recreation



## RECREATIONAL FACILITIES

### COMMUNITY PARK

32.7 Acres

1050 Edgewood Rd

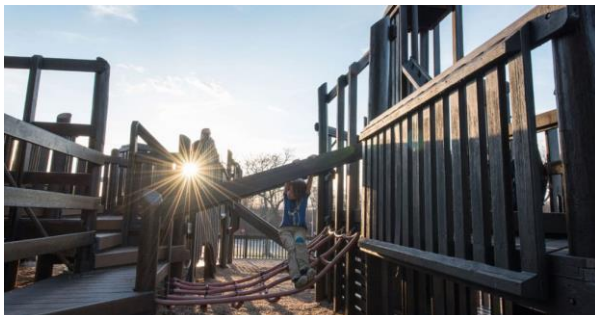
- Pool Complex w/parking
  - Dedicated 1981
  - Paved Parking, 2 lots with 130 spots each, gravel parking is also available.
  - Olympic Sized Community Pool (lighted), diving area, intermediate and tot sized pools, snack bar, dual slides, diving boards, all pools are heated.
- Kids Kingdom Playground
  - Dedicated in 1992
  - Pavilions available to reserve for parties to residents
- Tennis Courts & Basketball Complex
  - 4 lighted community tennis courts
  - 1 lighted basketball court
- Community Softball Field (lighted)
- Nature Trail
- Picnic area with restroom facility and pavilion



Leagues: Home of the LMT Swim and Dive Team  
Home of PAA

### 2018 Improvements

- Repainted Kids Kingdom, added traction to some areas to prevent slipping.
- New pump for pool
- New Point of Sales System for easier gate entry
- All four pools painted, caulked, and leaks addressed.
- Slides refinished



- New lane lines and reals
- Concession stand added a fryer
- Infield mix added to all complexes, new bases and mound work.
- Continued the trex overlay
- Sustain the playground facility and pavilions



# LOWER MAKEFIELD TOWNSHIP Parks & Recreation



## Planned improvements

- Identify an updated long-term plan for the pool to identify possible maintenance needs, potential expansion or repair wants and to address the financial future of the pool.
- Kids Kingdom restroom improvements
- Continue landscape/ Pool and Kids Kingdom.



## COMMUNITY POOL COMPLEX

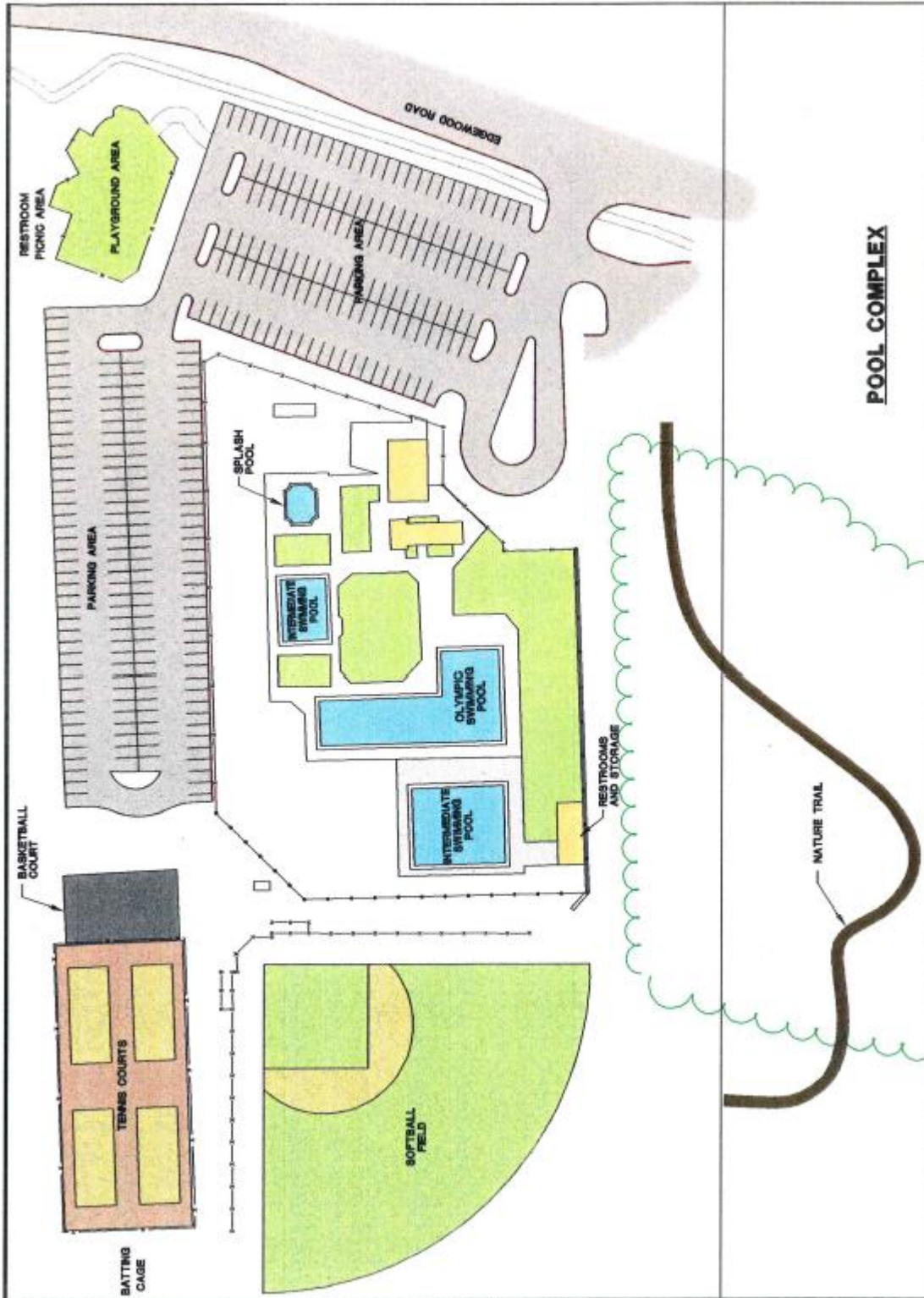




# LOWER MAKEFIELD TOWNSHIP Parks & Recreation



-9-





# LOWER MAKEFIELD TOWNSHIP **Parks & Recreation**



## BASEBALL COMPLEX

Edgewood Rd

- Greg Caiola Fields
- Convertible 50/70 convertible to 46/60.
- 145 parking spaces plus additional gravel parking available
- Stoddard Field: 3, 60'
- Concession stand
- 2x Sand Volley Ball Courts

Leagues: Home of PAA Baseball

2018 Improvements

- Reinforced Diamond Dirt Storage with concrete blocks.
- Added new bases and pitching mound
- Continuous mowing
- PAA updated batting cages after storm damage
- Added reserved parking for concession volunteers





# LOWER MAKEFIELD TOWNSHIP Parks & Recreation



## FRED ALLAN SOFTBALL COMPLEX

23 Acres

1500 Oxford Valley Rd

- Dedicated in 1999
- 3 Soft Ball Fields, dugouts, water on 3 fields, electric on 2 fields
- Batting Cage
- 2 All-weather Bocce Courts; tot pieces
- Picnic area with concession stand
- Restroom Facility and covered pavilion with a floor
- Walking trail/ bike path
- Approximately 120 paved parking spots
- Underdrains installed on all three fields in 2014

### 2018 Improvements

- Infield mix applied to fields
- New backstops after storm damage

### Planned Improvements

- Completion of trail system
- Complete top coat and stripe parking lot
- Installation of “turn-around” at end of parking lot or installation of connector road
- Add in the new batting cage to be installed by PAA







## Macclesfield Park

91.9 Acres

1000 River Rd

- Front 60 acres dedicated 1989, rear 30 acres dedicated in 1997
- 8 full size multi-purpose fields (6 lighted) for use as regulation soccer football and baseball fields. Including one all-weather turf field installed by YMS.
- 2, 90' lighted baseball fields
- 1, 75' lighted baseball field
- 4 sand volleyball courts
- 2 mid-sized soccer fields
- 5 mini soccer fields
- Tot lot play area
- Bike path and exercise stations
- Picnic areas and restrooms (3 stall women, 2 men)
- 2 pavilions, a concession stand, maintenance garage
- Access to the canal towpath
- Approximately 600 parking spaces, paved
  - 400 front lot
  - 200 rear lot

Leagues: Home of the Yardley Makefield Soccer, Lower Makefield Football Association, and Pennsbury Athletic Association

### 2018 Improvements

- Ongoing turf restoration and over seeding
- Wood carpet in playground
- Stadium lights ballast repairs light switch repairs
- Security cameras updated
- A new conversion baseball field has been installed on Mac A, and will be functional for the spring 2018 season. The Field is 50/70 fields convertible to 46/60 field.

### Planned Improvements

- Upgrade stadium lighting circuitry on original fields A, C, D including replacing with LED lights
- 3 acres of fenced area and clean up and reclaim
- Fill parking lot cracks and resurface parking lots
- Additional restroom capacity, clubhouse consideration.
- Replacement of AstroTurf field with new Field Turf by YMS





# LOWER MAKEFIELD TOWNSHIP Parks & Recreation



## MACCLESFIELD PARK MAP





# LOWER MAKEFIELD TOWNSHIP Parks & Recreation



## MEMORIAL PARK

63.5 Acres

1950 Woodside Rd

Purchased 1996, \$1.5 million

- Home of the 9/11 Garden of Reflection
- 2 basketball courts
- 2 sand Volley Ball Courts
- Community Garden Plots
- Restrooms with a covered Patio
- 1 skinned softball field
- Secret Garden inclusive playground with ADA parking lot
- multipurpose field with goals, benches
- Install gaga court by girl scouts
- Pavilion
- Library
- 1k loop for walking

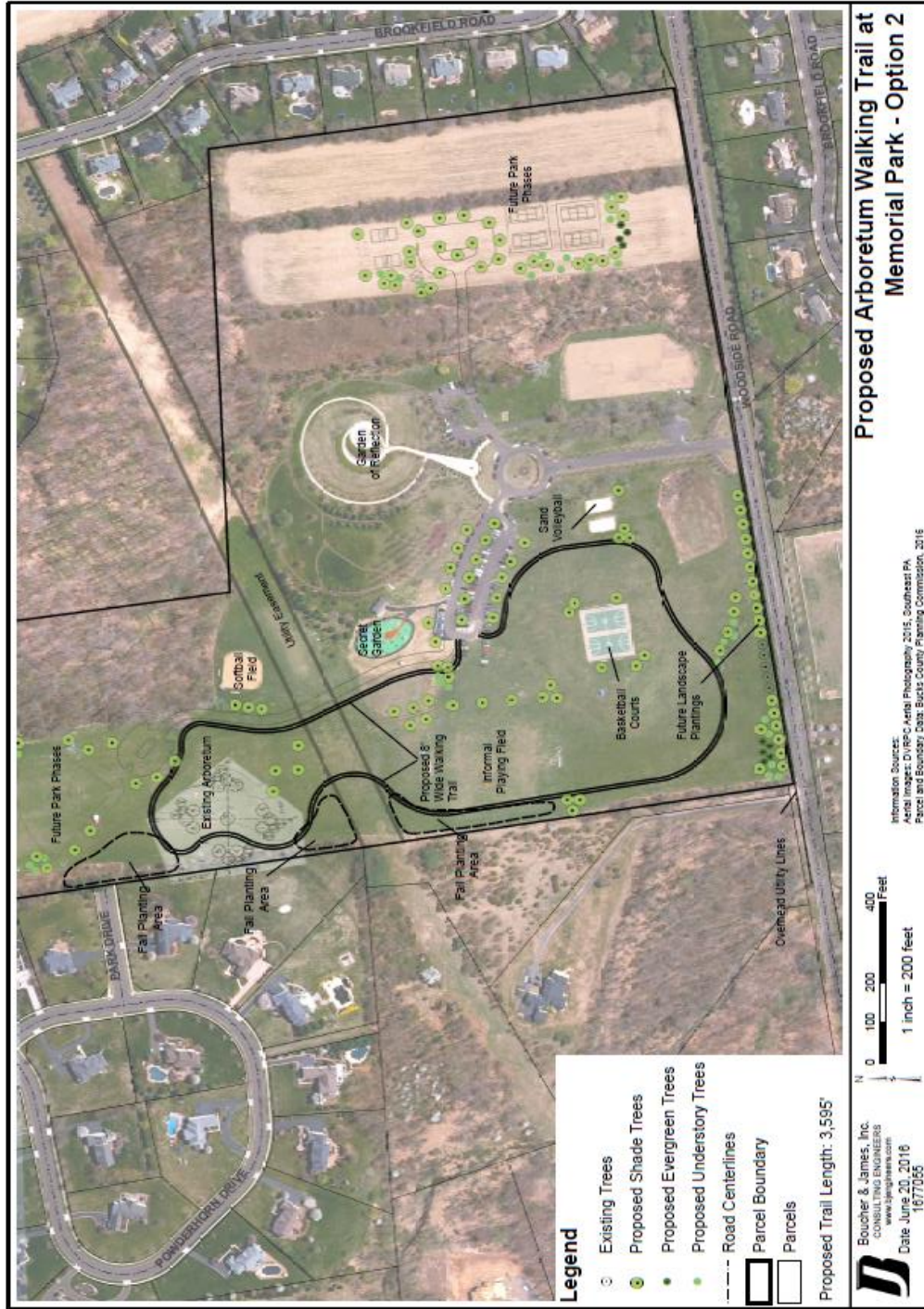
**DCNR GRANT ANNOUNCEMENT:** Lower Makefield Township has been awarded \$250,000 for “further development of Memorial Park. Work will include construction of pedestrian walkways, tennis courts, bocce ball courts, horseshoe pits, gazebo, and pavilion; installation of fitness station equipment with required safety surfacing and fencing; ADA access, landscaping, project sign and other related site improvements.”







# LOWER MAKEFIELD TOWNSHIP Parks & Recreation









## FIVE MILE WOODS

298 Acres

1305 Big Oak Rd

- 285 acres of open space preserve purchased in 1979
- 13 acres of open space added
- Nature center
- Ranger office
- Manor house/5 miles of nature trails/ handicap accessible
- Gravel parking for 50 vehicles

### 2018 Improvements

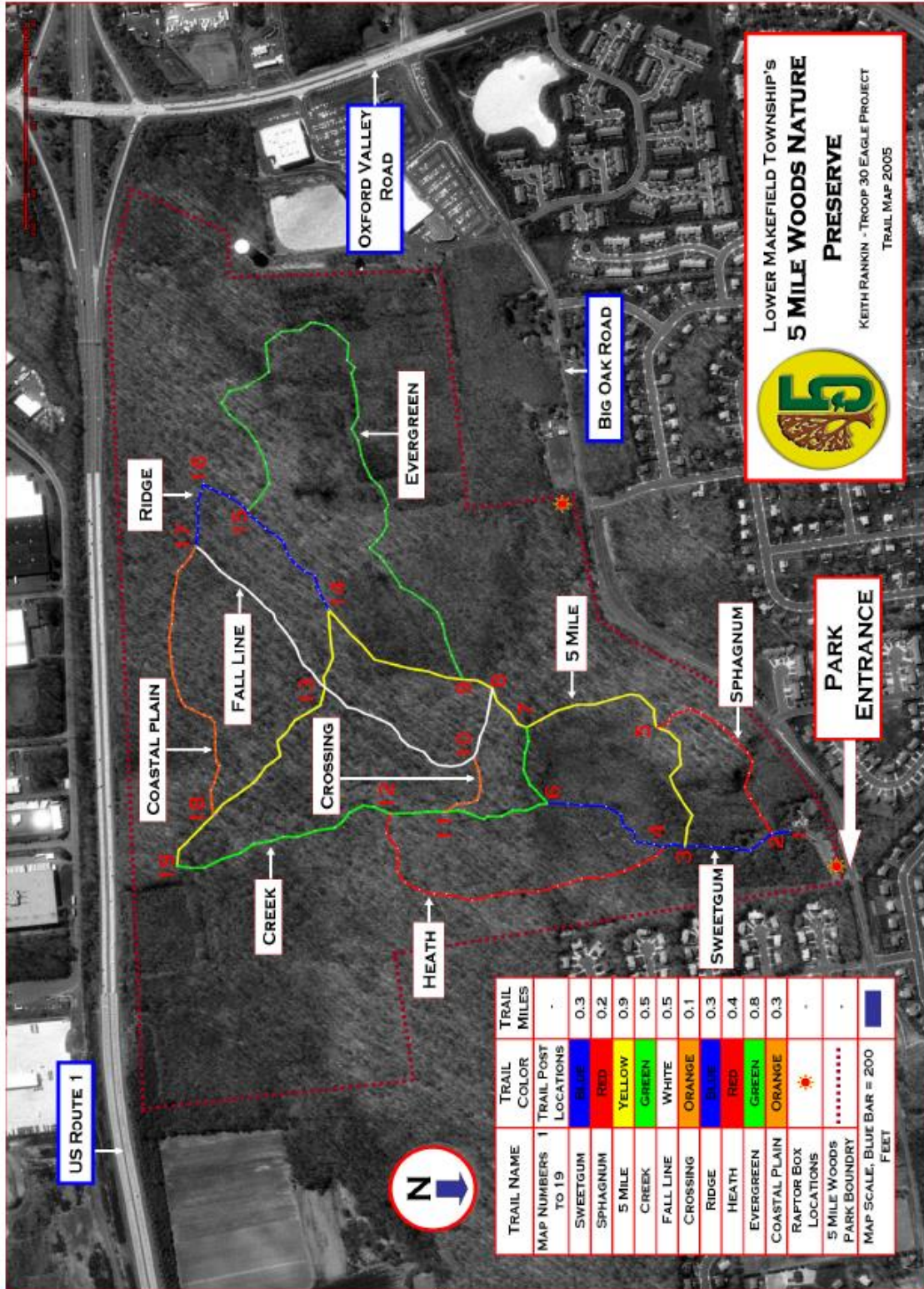
- Removed and replaced carpets, repainted and removed trash from Manor House

### Planned Improvements

- Update the inside of the nature center



# LOWER MAKEFIELD TOWNSHIP Parks & Recreation





## LMT BIKE PATHS

25 Miles

Connected

- Continue snow removal
- Continued Debris Removal
- Continued patching

### Planned Improvements

- Considering a gap analysis of the existing parks.
- Complete link on Woodside Road; Upper Hilltop to Merrick Road, possibly done in conjunction with scudders falls bridge restoration work a and path extended down Woodside to Taylorsville Road.
- Complete new bike path along perimeter of Snipes tract, Quarry Road to Dolington Road.
- Greg Caiola Complex; Oxford Valley Road between Edgewood and Roelofs Road; Greenway tie-in. (in progress)
- Creamery Road link connecting existing path to Yardley Newtown Road; approximately 1500 ft.
- Resident request extension Dolington Meeting house to Farm View.
- Request from resident to consider completing link on Lindenhurst to Woodside
- Continue resurfacing program as identified by Township engineer and Park and Recreation.

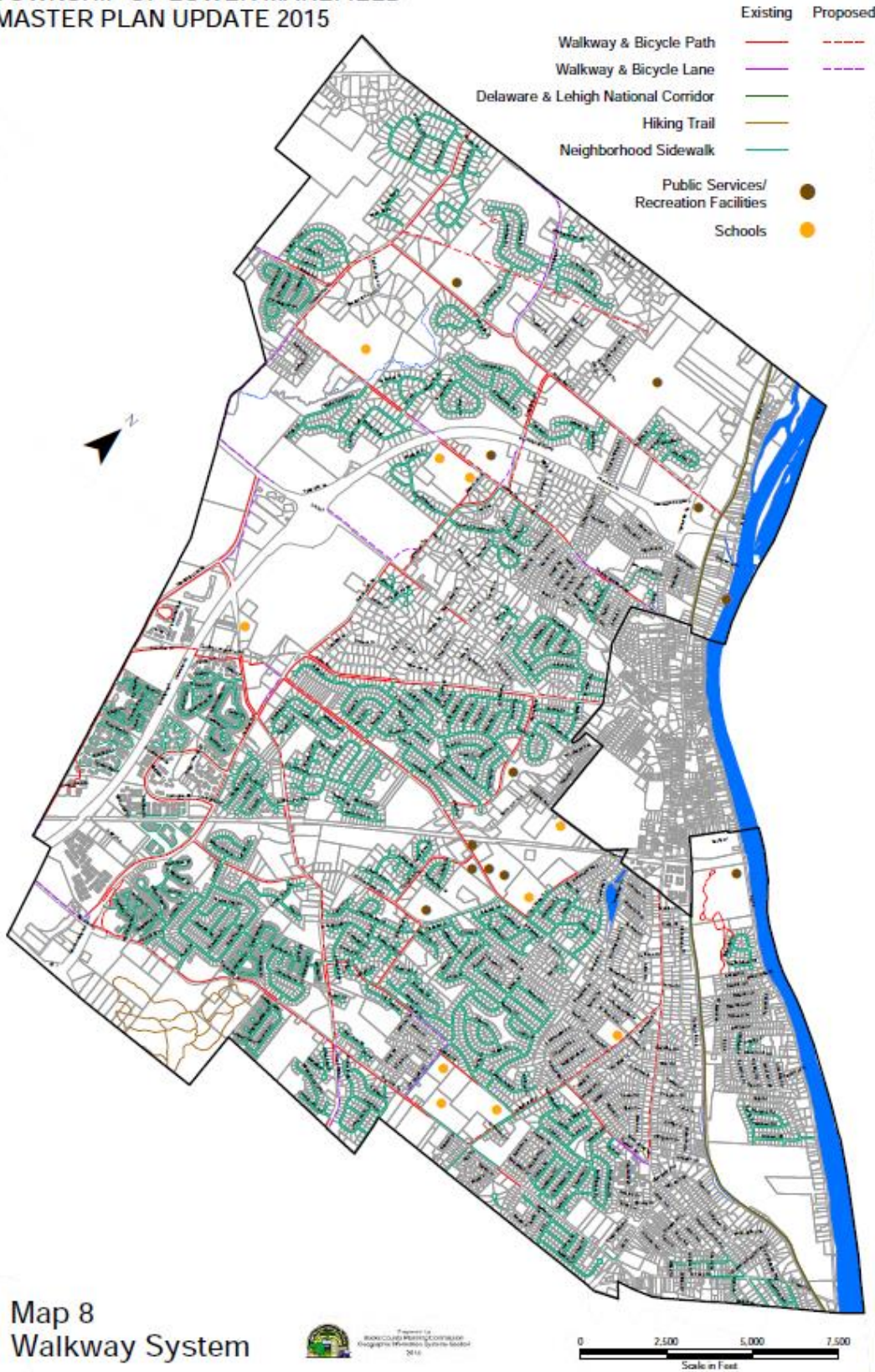




# LOWER MAKEFIELD TOWNSHIP Parks & Recreation



TOWNSHIP OF LOWER MAKEFIELD  
MASTER PLAN UPDATE 2015







# LOWER MAKEFIELD TOWNSHIP Parks & Recreation



## DOG PARK

3.5 Acres

1950 Covington Rd

- Open June 12, 2018
- Dedicated July 15, 2018

### 2018 Improvements

- Maintenance shed
- Real-time scan system
- Cameras
- Multi use water fountain
- 10 Benches
- 10 waste stations
- 2 large trash cans
- Donor items and signage
- Multi use water station
- Dedication Plaque

### Planned Improvements

- Continue to improve processes
- Add a shade structure in main entry
- Add Shade throughout the park
- Add water fountains in large dog, small dog and rotational field
- Follow engineer recommendation for improvement and modification.





# LOWER MAKEFIELD TOWNSHIP Parks & Recreation





# LOWER MAKEFIELD TOWNSHIP Parks & Recreation



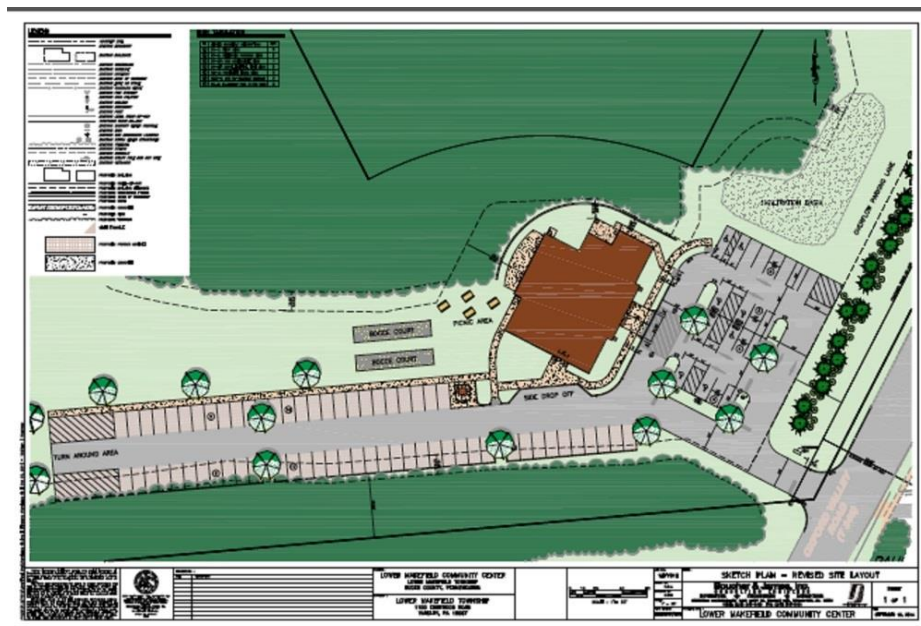
## COMMUNITY CENTER

- Opened January 16, 2018 - Dedicated March 12, 2018.
- large multi-purpose room,
- 2 classrooms
- Conference Room
- 2 offices
- Small industrial kitchen.
- 5,235 square-foot space
- Home of the Lower Makefield Township Seniors
- Home of the Newtown Quilters Guild
- Space available for scheduled programs, scheduled classes, senior programs, camps and lectures.
- Dedication plaque



## Future Considerations

- Add shade to the back-porch area
- Add permanent outdoor recreation area with items like horse shoes, ping pong, etc...
- Start community events like family game night, dances, themed birthday party packages, open mic nights, holiday functions, etc...







# LOWER MAKEFIELD TOWNSHIP Parks & Recreation



SNI



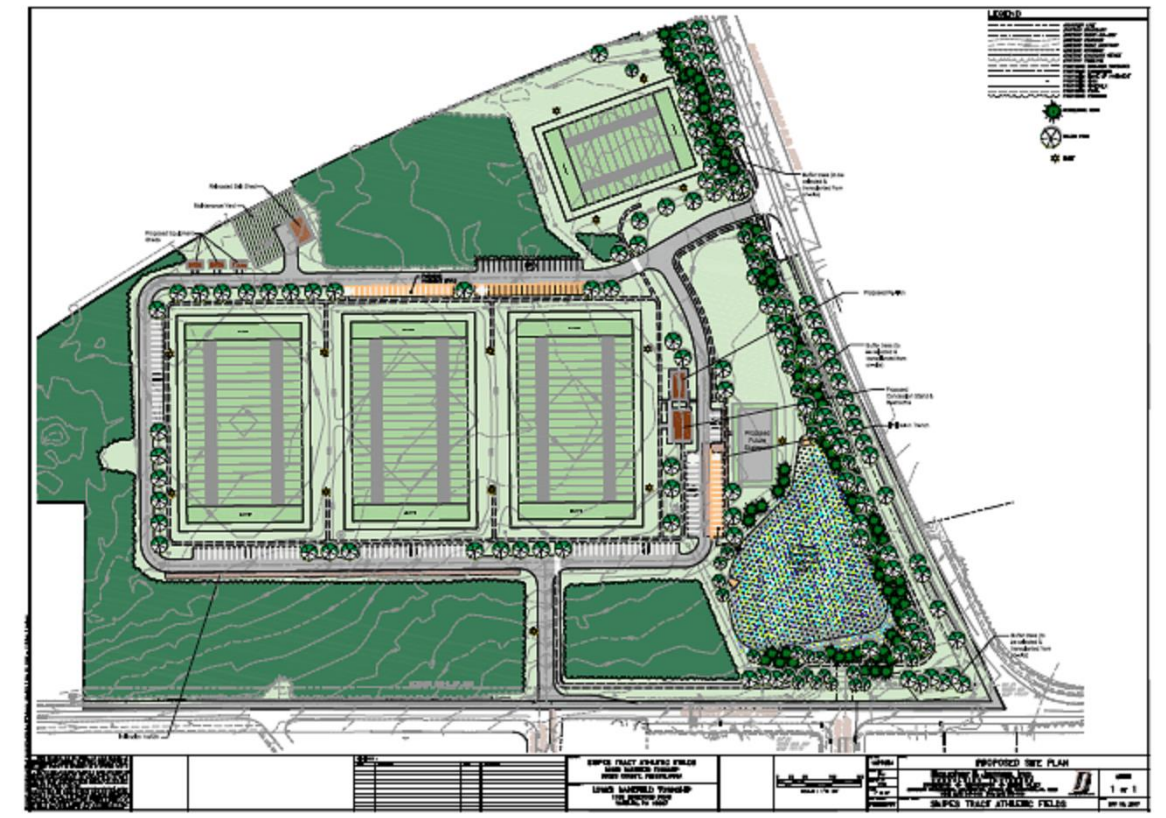




# LOWER MAKEFIELD TOWNSHIP Parks & Recreation



- Completing a needs assessment to determine the needs in the community for sports fields.
- Balloon test were completed to test the site
- Located on the corner of Dolington and Quarry Hill Roads.
- Plans are being reviewed with the concerns of the township residents.



## POCKET PARKS

### VETERANS SQUARE

2.8 Acres

1660 Edgewood Rd

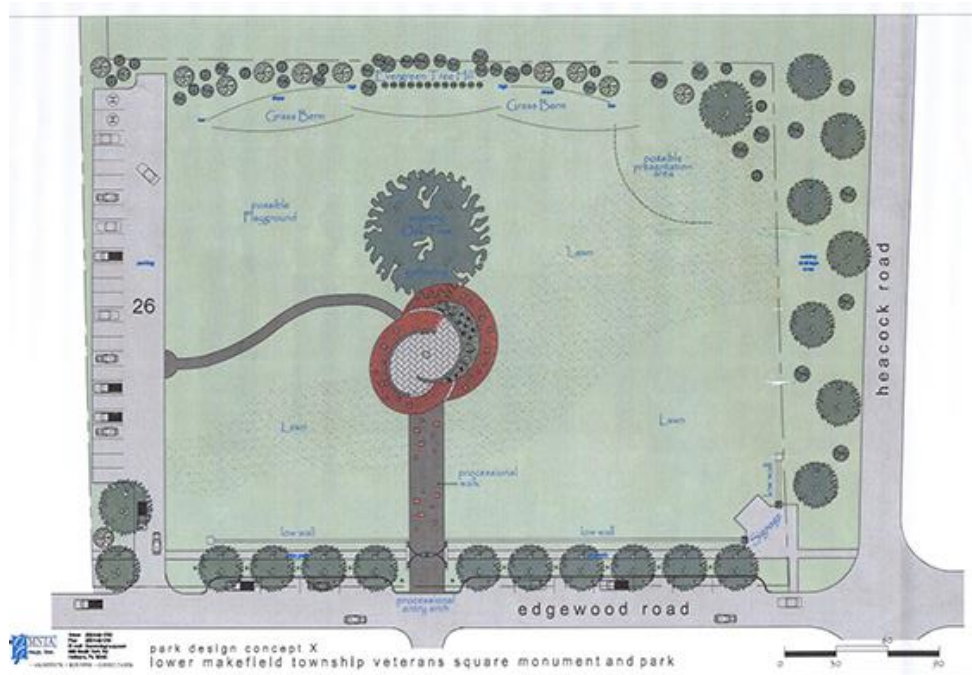
- Veterans Square Monument
- Weekly Farmers Market
- Tot lot play area
- Picnic area with benches
- Gravel Parking area for 50 cars
- Water fountain

#### 2018 Improvements

- Sign installed on corner June 2018
- Wood fiber playground surface
- Parking spaces marked weekly for Farmers Market
- Addition of mulch/sand in playground

#### Planned Improvements

- Complete landscaping, walkways and paths as shown on concept plan.





# LOWER MAKEFIELD TOWNSHIP Parks & Recreation



## HEACOCK MEADOWS

8.2 Acres

Heacock/Bluebird/Covington

- 4.5 Acres of Heacock Meadows Pocket Parks.
  - #1, #2, #3 and #4 off Cardinal Drive and off Bluebird Drive in Heacock Meadows Development.
  - Dedicated 1979
  - 1 Tot lot
  - Tennis court
  - 4 Pickleball courts

### 2018 Improvements

- Mulched playground
- Added a lock box with portable pickleball nets for the public's use

### Planned Improvements

- Replace tennis court fence

## PEAKE FARM

1.69 Acres

Twig Lane

- Tot lot playground

## YARDLEY HUNT

3.1 Acres

Revere/Schulyer

- Schulyer Drive: 4 dedicated tennis
- Revere: 3 tennis/ pickle ball
- Paved parking areas approximately 12 vehicles at each location

League: Home of Yardley Makefield Tennis

### Planned Improvements

- Replace all fencing; install bottom rails
- Consider demolition and repair





# LOWER MAKEFIELD TOWNSHIP Parks & Recreation



## AUGUST 2017 – JULY 2018 PARKS AND RECREATION HIGHLIGHTS

**August:** Electric installed at Veterans Square in preparation for sign.

New bike path at Veterans Square was installed.

New sign was installed by boy scout at Macclesfield Park.

**September 2017:** Community Pride Day: Vendors, Rides, food trucks, activities, police and fire demonstrations, athletic competitions run by local leagues, small activities for children, bands, mummies, street performers and fireworks.

9/11 Ceremonies

Ground Breaking at the dog park

9/11 Girl Scout project informing youth about the 9/11 monument was completed.

**Lower Makefield  
Community Pride Day**  
LMT COMMUNITY PARK, 1050 EDGEWOOD ROAD, YARDLEY PA  
September 3, 2017, The fun starts at 12:00 PM, Fireworks are at 8:15PM  
Free Fun for kids from 12:00PM-5:00PM

**Schedule of Events**

9:00AM 3 V 3 BASKETBALL TOURNNEY	Live Music at the Showmobile
12:00PM Uptown String Band	1:00PM Station Avenue
1:00PM Magic & More	2:15PM Exit Our Hero
2:00PM Bucks County Singers	3:30PM CatHouse Blues
3:00PM Puppets Pizzazz	4:45PM Fahrenheit
4:00PM Kids Music Round	6:00PM Sherwood Brothers
	7:00PM Grand Finale

**Celebrity Dunk Tank**  
12:00PM-4:00PM to include Pennsbury School District  
Fireworks, Township Officials and more.  
Schedule subject to change.

**Sponsors and Vendors**

<b>Exhibits &amp; Booths and More</b>	<b>Food Festival!</b>
Artists of Yardley	featuring local restaurants and farms
Bible Fellowship with Free Cotton Candy	BCTSL/Loose Club-grilled pork, chili
Boy & Girl Scouts	Bon Jour Creperie
Five Mile Woods with Artifacts	Charlann Farms Sweet Corn
Yardley Makefield Emergency Unit	Drinks N More
Congregation Kol Emel	McCaffrey's Market- Burgers, sausage
Lower Makefield Dog Park	Panzita- Funnel Cakes
Makefield Highlands Golf	Pizza Yeah!
Yardley/Makefield Lions Club - Collecting canned goods and non-perishable foods.	Winkler's Ribs & Cajun Cuisine
Pennsbury School Community Booth	
Makefield Women's Association	
Lower Makefield Police exhibits	

**More Fun events hosted by:**  
LMFA, YMS, Lacrosse, PAA and Frisbee

Noting: All elements necessary and other available to. With necessary funds.  
Sponsors appreciated and always help contribute. Makefield Township Thanks.  
FOR MORE INFORMATION: www.lmt.org CALL 267 274 1112

LMT PARKS AND RECREATION REPORT

**HIGH PRIORITY**

**Community Center:** The Parks and Recreation Department is now in the Community Center. 1550 Oxford Valley Rd, Yardley PA, 19067  
(Next to Fred Allan Softball Complex)

- Make reservations for our facilities
- Purchase discount kid tickets
- Register for classes or programs
- Make recommendations and suggestions

People interested in the DOG PARK and THE POOL will still register at the **Spennetta Building** 1100 Edgewood Rd, Yardley PA 19067.

The grand opening for the Community Center is March 10, 2018. The day will start with a ribbon cutting in the morning. In addition, we will have vendors, samplings of classes, open registration for programs, along with tours and information about senior programs. There will be activities for people of all ages including face painting, balloon art, and crafts for the kids. There will also be table space for some of our leagues and local organizations.

**Dog Parks:** The Dog Park will open soon. In order to open electrical installation is required, followed by cable, and new signs that must be installed. We will also be adding the brick stators purchased, along with benches and other dog features.

**Youth Committee Update:** The current Board is reviewing candidates for the 2018-2019 Youth Committee. The bylaws are almost complete and will be available soon. The Committee is reaching out to people about the youth programming starting in the spring. Programs may include a tutoring, a technology help desk, dorm room cooking, college finance, and an elementary art class. The committee will also be working to engage the youth and teens at some of our upcoming community events.

**DOG PARK CLASSES**  
Dog Park Observation Classes are now available on the Parks and Recreation Website.  
February 10, 9:00PM-10:00PM  
February 20, 7:00PM-8:00PM  
March 6, 9:00-10:00AM  
March 17, 9:00-10:00AM  
After the class is complete residents can pre-register online and providing photo record, PA Dog License and certificate from the class.

**FUTURE INITIATIVES**

- Update mission, vision and goals.
- Update policies and procedures.

**FUTURE PROJECTS**

- Install Feedback System within the park.
- Social Media
- Senior Donation program

**WE HAVE GONE DIGITAL**  
It is now possible to request the use of goals and pavilions online through our Community Pass System. You will also be able to see what is going on in our parks and in the community center on the new community calendar. You will also be able to register for any of our programs or classes. Everything from Yoga, art and music, to swim lessons can all be found online.

MONICA TERNEY, PARKS AND RECREATION DIRECTOR | February 2018

**October 2017:** New Youth Committee was formed

**November 2017:** Veterans Parade

Dog Park classes started

Started to print monthly Parks and Rec Reports

**December 2017:** Donna Liney official retired

**January 2018:** Soft opening of Launched Community Pass

- Reservation Manager to automate the permitting system.

**Community Center  
Park and Rec Moved in to the facility.**

- The Lower Makefield Township seniors moved in and started offering programming.
- Dog Park classes were offered at the community center.

**LOWER MAKEFIELD TOWNSHIP  
Parks & Recreation**

Welcome to Lower Makefield Township Parks and Recreation

<b>Create an Account</b>	<b>Existing Users</b>
<p>CommunityPass is your resource for Lower Makefield Township Parks and Recreation. To begin, click the sign-up link above, complete the sign-up form and enjoy the convenience of online registration! Once your account is created you will receive an email that contains your login information. Be sure to keep this email in a safe place so that you can continue to enjoy the convenience of online registration. Please add <a href="mailto:prinfo@lmt.org">prinfo@lmt.org</a> to your email safe list to ensure delivery of email confirmations and receipts.</p> <p>To view our current program guide please <a href="#">CLICK HERE</a></p> <p style="text-align: center;"><a href="#">Create an Account</a></p> <p><small>Please Note: If you already have a CommunityPass account from another organization or community, please use your existing username and password to log in and register for programs offered through this organization. You do not need to create a new account.</small></p>	<p>Please Log In</p> <p>Username</p> <input type="text" value="MTierney"/> <p>Password</p> <input type="password" value="*****"/> <p style="text-align: center;"><a href="#">Log In</a></p> <p><a href="#">Forgot username or password</a></p> <p><a href="#">Need Help?</a></p>



# LOWER MAKEFIELD TOWNSHIP Parks & Recreation



**February 2018:** Printed and distributed the first program guide.

The Parks and Recreation logo was approved at the February 21<sup>st</sup> BOS meeting. The new logo projects a positive image for the Parks and Recreation Department promoting connectivity and accessibility to all parks and programs both now and in the future.

The Community Center acted as an emergency warming station as much of the Township was without electric for up to a week.

A new program guide was launched and included a number of classes including Yoga, Zumba, Art, Card Playing, writing, meditation, kids soccer, music, kids cooking, camps and more.

Community Pass Launch:

- Realtime calendar of all facilities
- Program registration

**March 2018:** Grand Opening of Community Center

Started programming at the community center

The Community Center was used as an emergency charging station during two large snow storms.

**April 2018:** Started issuing new key fobs for the pool, installed our new Point of Sale System at the pool. Restructured the entry gate to accommodate a fast pass line and a guest line.

Community Center

- The parks and Recreation Department started offering programming to the public at large.
- The quilters guild started hosting their monthly meetings in the great room. (2-year contract)
- The EAC Started hosting their guest lectures in the facility.
- PEO started hosting their board meetings (2-year contract)
- The police did a training in the facility.
- Odyssey of the mind rented space to prep for their competition.

**May 2018:** Launched a sponsorship campaign for Community Pride Day

The summer program was printed and distributed

**Fee for Volleyball Rental:** Approved by the BOS May 2, 2018. There will be a fee for exclusive use of volleyball courts in LMT.



**LOWER MAKEFIELD TOWNSHIP**  
**Parks & Recreation**

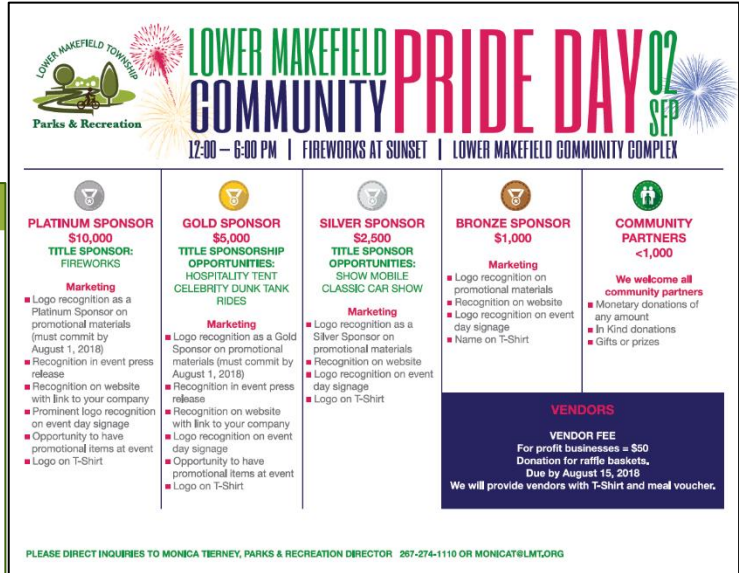
With 28 Miles of bike trails that connect parks, sports fields, 5-Mile Woods, the 9/11 monument, the pool and the dog park there are opportunities for people (and dogs) of every age and ability level. The Lower Makefield Township Parks and Recreation Department is located at the new Community Center and is open to the public from 9:00AM-3:00 PM for discounted ticket purchases, field or pavilion rental requests, and to sign up for programs like the classes and camps you will find within this catalog. For questions or feedback please call 267-274-1110 or email [prinfo@lmt.org](mailto:prinfo@lmt.org).

Online registration for the pool, dog park, field and pavilion permit requests, as well as community center classes and programs can be found at: [Register.CommunityPass.net/LowerMakefield](http://Register.CommunityPass.net/LowerMakefield)

\*Note: if you already have an account for the pool or dog park, please use the same account!

**2018 SUMMER PROGRAM GUIDE**  
AT THE COMMUNITY CENTER

1550 OXFORD VALLEY RD | YARDLEY | PA | 19067  
267-274-1111 | [LMT.ORG](http://LMT.ORG)



**LOWER MAKEFIELD TOWNSHIP**  
**Parks & Recreation**

## LOWER MAKEFIELD COMMUNITY PRIDE DAY 2018

12:00 – 6:00 PM | FIREWORKS AT SUNSET | LOWER MAKEFIELD COMMUNITY COMPLEX

<p><b>PLATINUM SPONSOR</b> \$10,000 <b>TITLE SPONSOR:</b> FIREWORKS</p> <p><b>Marketing</b></p> <ul style="list-style-type: none"> <li>■ Logo recognition as a Platinum Sponsor on promotional materials (must commit by August 1, 2018)</li> <li>■ Recognition in event press release</li> <li>■ Recognition on website with link to your company</li> <li>■ Prominent logo recognition on event day signage</li> <li>■ Opportunity to have promotional items at event</li> <li>■ Logo on T-Shirt</li> </ul>	<p><b>GOLD SPONSOR</b> \$5,000 <b>TITLE SPONSORSHIP OPPORTUNITIES:</b> HOSPITALITY TENT CELEBRITY DUNK/TANK RIDES</p> <p><b>Marketing</b></p> <ul style="list-style-type: none"> <li>■ Logo recognition as a Gold Sponsor on promotional materials (must commit by August 1, 2018)</li> <li>■ Recognition in event press release</li> <li>■ Recognition on website with link to your company</li> <li>■ Logo recognition on event day signage</li> <li>■ Opportunity to have promotional items at event</li> <li>■ Logo on T-Shirt</li> </ul>	<p><b>SILVER SPONSOR</b> \$2,500 <b>TITLE SPONSOR OPPORTUNITIES:</b> SHOW MOBILE CLASSIC CAR SHOW</p> <p><b>Marketing</b></p> <ul style="list-style-type: none"> <li>■ Logo recognition as a Silver Sponsor on promotional materials</li> <li>■ Recognition on website</li> <li>■ Logo recognition on event day signage</li> <li>■ Logo on T-Shirt</li> </ul>	<p><b>BRONZE SPONSOR</b> \$1,000</p> <p><b>Marketing</b></p> <ul style="list-style-type: none"> <li>■ Logo recognition on promotional materials</li> <li>■ Recognition on website</li> <li>■ Logo recognition on event day signage</li> <li>■ Name on T-Shirt</li> </ul>	<p><b>COMMUNITY PARTNERS</b> &lt;1,000</p> <p><b>We welcome all community partners</b></p> <ul style="list-style-type: none"> <li>■ Monetary donations of any amount</li> <li>■ In Kind donations</li> <li>■ Gifts or prizes</li> </ul>
---	---	---	--	---

**VENDORS**

VENDOR FEE  
For profit businesses = \$50  
Donation for raffle baskets,  
Due by August 15, 2018

We will provide vendors with T-Shirt and meal voucher.

PLEASE DIRECT INQUIRIES TO MONICA TIERNEY, PARKS & RECREATION DIRECTOR 267-274-1110 OR [MONICAT@LMT.ORG](mailto:MONICAT@LMT.ORG)

**GRANT:** The Commonwealth of Pennsylvania just awarded Lower Makefield Township \$700,000 under the PennDOT Transportation Alternatives Program to complete the bike path/trail system along Oxford Valley Road in front of the Community Center. This money will cover the construction costs while LMT is responsible for engineering and project management estimated at \$150,000. This is important link in making the Caiola Fields, Pool, Library, and Community Center bike / pedestrian accessible.

**Bench Program:** Approved by the BOS May 2, 2018. A Donation Program for township residents and groups to donate benches to the township at cost, with custom placards. There are certain designated areas where benches can be placed, any requests outside the preapproved locations will be reviewed by the P&R Board.

### PARK BENCH DONATION PROGRAM

**THE PRODUCT**  
DuMor Bench 68" long, 3 supports, recycled plastic material

Cost per bench, engraved plaque, and labor: \$1,117.00

- Location requests are not guaranteed and the park bench order request may be subject to Parks and Recreation Board review.
- Please consult with your tax advisor to determine if your gift is tax deductible.
- No returns or refunds

**ORDER FORM**

Name: \_\_\_\_\_

Address: \_\_\_\_\_

City: \_\_\_\_\_ State: \_\_\_\_\_ Zip: \_\_\_\_\_

Email Address: \_\_\_\_\_

Daytime Phone #: \_\_\_\_\_

Number of benches: \_\_\_\_\_

Total \$ enclosed: \_\_\_\_\_  
((\$1,117/Bench))

Please make checks payable to LMT with "park bench" in the description line.

Preference of bench location: \_\_\_\_\_




Please fill out below how you would like the display on your Memorial Bench to read:

--	--	--	--

QUESTIONS? PLEASE CONTACT  
LMT PARKS AND RECREATION  
267-274-1110  
[PRINFO@LMT.ORG](mailto:PRINFO@LMT.ORG)





# LOWER MAKEFIELD TOWNSHIP Parks & Recreation



Dog Park: Installed benches, waste stations directional signage and scan system.

**June 2018:**

Dog Park: Installed water fountain

Soft opening for the dog park

New sign installed at Veterans Square

**Community Center**

- Started a volunteer run walking club, that meets at the Community Center. They may start to expand to our other parks.
- AOY started renting space for their summer work groups.

**July 2018:**

Dog Park: Installed Sponsor signage, welcome signs and dedication plaque.

Grand opening Dog Park including dog themed vendors, face painting, music, dog activities and food trucks.

**Coming Soon:** Community Pride Day September 2, 2018

