

EQUIPMENT LIST FOR AREAS SHOWN

Pole				Luminaires				
QTY	LOCATION	SIZE	GRADE ELEVATION	MOUNTING HEIGHT	LAMP TYPE	QTY / POLE	THIS GRID	OTHER GRIDS
2	A1-A2	70'	-	70'	1500W MZ	5	5	0
2	A3-A4	60'	-	60'	1500W MZ	4	4	0
2	B1-B2	80'	-	80'	1500W MZ	10	10	0
2	B3-B4	70'	-	70'	1500W MZ	6	6	0
2	C1-C2	80'	-	80'	1500W MZ	8	8	0
10	TOTALS					66	66	0



MY PROJECT

Name: **Ciola Baseball Complex**
 Location: Morrisville, PA

GRID SUMMARY

Name: **Oxford Valley Road Spill**
 Spacing: 30.0'
 Height: 9.0' above grade

CONSTANT ILLUMINATION

SUMMARY	HORIZONTAL FOOTCANDLES
	Entire Grid
Scan Average:	0.3032
Maximum:	1.19
Minimum:	0.01
No. of Points:	26
LUMINAIRE INFORMATION	
Luminaire Type:	Green Generation
Design Usage Hours:	5,000 hours
Design Lumens:	134,000
Avg Lamp Tilt Factor:	1.000
No. of Luminaires:	66
Avg KW:	103.22 (112.2 max)

Guaranteed Performance: The CONSTANT ILLUMINATION described above is guaranteed for the design usage hours of the system.

Field Measurements: Illumination measured in accordance with IESNA RP-6-15 and CIBSE LG4. Individual values may vary. See the Warranty document for details.

Electrical System Requirements: Refer to Amperage Draw Chart and/or the "Musco Control System Summary" for electrical sizing.

Installation Requirements: Results assume +/- 3% nominal voltage at line side of the ballast and structures located within 3 feet (1m) of design locations.

ENGINEERED DESIGN

By: **A. Boersma**
 File # / Date: 179022_glare 18-Apr-16

Not to be reproduced in whole or part without the written consent of Musco Sports Lighting, LLC. ©1981, 2016 Musco Sports Lighting, LLC.



SCALE IN FEET 1 : 150

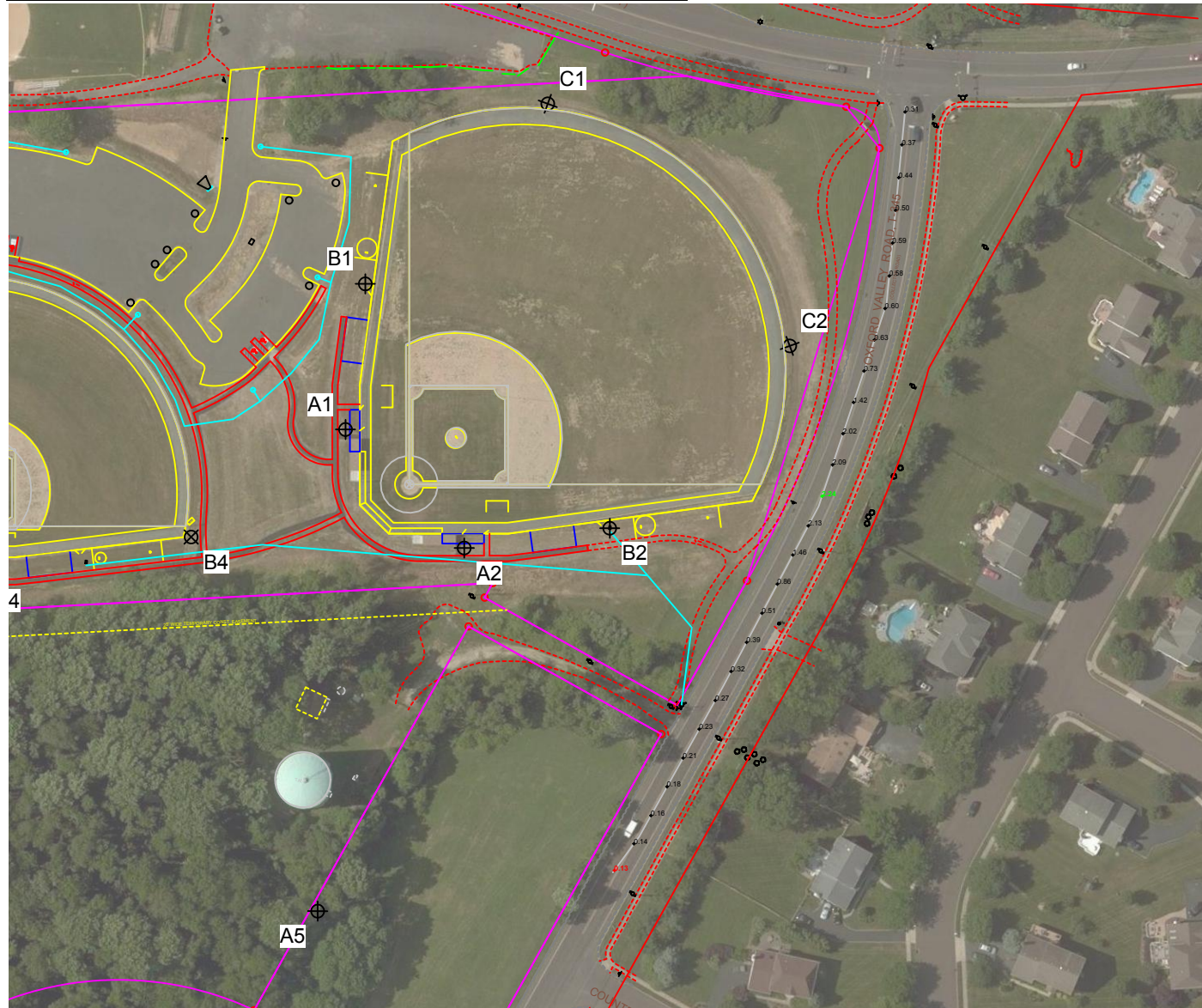


Pole location(s) ⊕ dimensions are relative to 0,0 reference point(s) ⊗

ILLUMINATION SUMMARY

EQUIPMENT LIST FOR AREAS SHOWN

Pole				Luminaires				
QTY	LOCATION	SIZE	GRADE ELEVATION	MOUNTING HEIGHT	LAMP TYPE	QTY / POLE	THIS GRID	OTHER GRIDS
2	A1-A2	70'	-	70'	1500W MZ	5	5	0
2	A3-A4	60'	-	60'	1500W MZ	4	4	0
2	B1-B2	80'	-	80'	1500W MZ	10	10	0
2	B3-B4	70'	-	70'	1500W MZ	6	6	0
2	C1-C2	80'	-	80'	1500W MZ	8	8	0
10	TOTALS					66	66	0



MY PROJECT

Name: **Ciola Baseball Complex**
 Location: Morrisville, PA

GRID SUMMARY

Name: **Oxford Valley Road Spill**
 Spacing: 30.0'
 Height: 9.0' above grade

CONSTANT ILLUMINATION

SUMMARY	MAX VERTICAL FOOTCANDLES
	Entire Grid
Scan Average:	0.7501
Maximum:	2.24
Minimum:	0.13
No. of Points:	26
LUMINAIRE INFORMATION	
Luminaire Type:	Green Generation
Design Usage Hours:	5,000 hours
Design Lumens:	134,000
Avg Lamp Tilt Factor:	1.000
No. of Luminaires:	66
Avg KW:	103.22 (112.2 max)

Guaranteed Performance: The CONSTANT ILLUMINATION described above is guaranteed for the design usage hours of the system.

Field Measurements: Illumination measured in accordance with IESNA RP-6-15 and CIBSE LG4. Individual values may vary. See the Warranty document for details.

Electrical System Requirements: Refer to Amperage Draw Chart and/or the "Musco Control System Summary" for electrical sizing.

Installation Requirements: Results assume +/- 3% nominal voltage at line side of the ballast and structures located within 3 feet (1m) of design locations.

ENGINEERED DESIGN

By: **A. Boersma**
 File # / Date: 179022_glare 18-Apr-16

Not to be reproduced in whole or part without the written consent of Musco Sports Lighting, LLC. ©1981, 2016 Musco Sports Lighting, LLC.



ILLUMINATION SUMMARY