



# LOWER MAKEFIELD TOWNSHIP

SUMMER 2020



Photo Credit: Jeff Goldberg

## LOOK INSIDE

Township Directory .....	3	Which Basin is in My Neighborhood .	16-17	Lower Makefield Twp. Community Day...	20
Makefield Highlands .....	4-5	Mixed-Use Overlay Information .....	17	Road Paving Progress.....	21
Parks and Recreation.....	6-13	Wellness Checks.....	18	Sewer Alternative Analysis.....	21-22
Spotted Lanternfly .....	14	Planning and Zoning Department FAQ.	19		

TOWNSHIP OFFICE 1100 Edgewood Rd, Yardley, PA 19067

Phone: 267.274.1100 | Visit Us at [www.lmt.org](http://www.lmt.org)

Since 1978, Hill Wallack has grown from a local firm into a regional leader. Our commitment to excellence drives us forward, but our strong relationships within our community keep us grounded.

As a mid-market law firm with offices in Pennsylvania, New Jersey and New York, we provide sophisticated, high-level service to clients in a cost-effective, responsive manner.

We are substantial in scope, but personal in service.

- Family & Matrimonial Law
- Banking & Financial Services
- Business & Commercial
- Creditors' Rights/Bankruptcy
- Employment & Labor Law
- Municipal Law
- School Law
- Real Estate & Land Use
- Trial & Insurance Defense
- Trusts & Estates

**Hill Wallack** LLP  
Attorneys at Law

hillwallack.com  
215.579.7700

777 Township Line Road | Yardley, Pa.



**A. Marrazzo's North River**  
LANDSCAPE, HARDSCAPE & RAIN WATER HARVESTING, INC.  
215.598.1412  
MarrazzosNorthRiver.com

New Landscape & Hardscape  
Property Maintenance  
Privacy Hedges  
Drainage Solutions  
Landscape Lighting  
Outdoor Sound System

5 STAR RATING  
BBB  
COASTAL SOURCE  
COUNTRYLANE  
ICPI

**GUTTER CLEANING**  
**GUTTER DOCTOR**  
215-322-7400  
PA050067

**ROOFING STORM DOCTOR**  
EXTERIOR RESTORATION  
215-357-2700  
**GUTTERS & SIDING**  
PA080483

**Penn Community Bank** | Here We Grow.

**Johnny Gonzalez**  
Multi-Site Manager

Penn Community Bank  
732 Stony Hill Road, Building 3  
Lower Makefield, PA 19067  
o: 215-257-5035 x2101  
e: jgonzalez@penncommunitybank.com

PennCommunityBank.com

**DEMENTIA SHOULD NOT DEFINE HER.**  
*Artis helps her be who she's always been.*



**ARTIS SENIOR LIVING**  
Yardley

**TheArtisWay.com/NewtownNews • 267-393-4356**

Artis Senior Living of Yardley: 765 Stony Hill Road, Yardley, PA 19067  
Check out our other nearby communities in Huntingdon Valley and Princeton Junction.

Your Partner in Memory Care



# TOWNSHIP DIRECTORY

1100 Edgewood Road • Yardley, PA 19067 • Phone: 267-274-1100  
Website: www.lmt.org

On behalf of the Board of Supervisors and the Staff of Lower Makefield Township, I hope you enjoy this newsletter. We are always available to you; please feel free to contact us with your questions and concerns. We are committed to the health and wellbeing of the staff and our residents. During the COVID-19 pandemic, Township offices are closed for physical meetings however Township business is still being conducted. Please see the list of contact information below to learn more about how to communicate with the Township. For up-to-date Township COVID-19 updates please visit LMT.org and click on the red COVID-19 link.

-Fred Weiss, Chair

## BOARD OF SUPERVISORS

**Fredric K. Weiss**, Chair  
267-274-1146  
Email: fweiss@lmt.org

**Daniel R. Grenier**, Vice Chair  
267-274-1191  
Email: dgrenier@lmt.org

**James McCartney**, Secretary  
267-274-1147  
Email: jmccartney@lmt.org

**Suzanne S. Blundi**, Treasurer  
Phone: 267-274-1145  
Email: sblundi@lmt.org

**John B. Lewis**, Supervisor  
267-274-1143  
Email: jlewis@lmt.org

## TOWNSHIP DEPARTMENTS

Lower Makefield Township is dedicated to the wellbeing of our residents. In an emphasis to focus on the health of the public and our employees, we are encouraging residents to call the Township before stopping into our buildings. Your questions can be answered on the phone and much of our permitting and registration can be done electronically. Prior to coming into Township offices' we encourage you to call or email first, in an attempt to serve you efficiently.

### POLICE

- Questions and concerns, of a non-emergency nature, can be addressed by calling (215) 493-4055 between 8:30 A.M. – 4:30 P.M. We can also give insights on email and other digital means of obtaining information as opposed to coming into the offices.
- For all non-emergency issues, that require a police officer, please call non-emergency dispatch at (215) 493-4011.
- For all emergencies please dial 911.

### PARKS AND RECREATION

- Permits and Registration questions can be addressed by calling 267-274-1110
- Registrations can be completed at <https://register.communitypass.net/LowerMakefield>
- Dog Park questions can be addressed by calling 267-274-1105 or by emailing [dogpark@lmt.org](mailto:dogpark@lmt.org)
- Pool related questions can be addressed by calling 267-274-1105 or by emailing [communitypool@lmt.org](mailto:communitypool@lmt.org).
- All other park and recreation questions can be addressed by calling 267-274-1110.

### PUBLIC WORKS

- If you have a concern or question, please call the main Public Works number at 267-274-1130 or by emailing [susanr@lmt.org](mailto:susanr@lmt.org) with cc to [greggh@lmt.org](mailto:greggh@lmt.org).
- If you are looking to apply for a road opening permit, please call 267-274-1130 and we will coordinate over the phone and send you the permit via email.

### CODES AND ZONING

- Questions regarding anything related to Building Permits can be made via phone call to 267-274-1126.
- Building Permit applications can be submitted online as a PDF to [permits@lmt.org](mailto:permits@lmt.org), or through our "after hours drop box" conveniently located to the right of the main entrance doors of the Municipal Building.
- Questions regarding Zoning and Planning issues can be made via phone call to 267-274-1123 or via email at [jimm@lmt.org](mailto:jimm@lmt.org).
- Questions and submissions regarding Sewer Lateral Inspections can be made via email to [sewerlateral@lmt.org](mailto:sewerlateral@lmt.org). Submission of paper forms, USB drives and/or the \$100 permit fee checks can be made through our "after hours drop box" conveniently located to the right of the main entrance doors of the Municipal Building.





As a resident of Lower Makefield Township you are always invited to enjoy Makefield Highlands Golf Club and Makefield's Public House Restaurant. As a resident, you receive discounted golf rates and increased window to book your tee times in advance. In addition to golf, the club serves as a dining destination and an event space for public events and private parties. We offer an award-winning driving range; short game area and our PGA teaching professional staff includes some of the best instructors and clinicians in Pennsylvania.



Golf courses were one of the first businesses to be allowed to reopen during the Governors Red Phase. Governor Wolf and most all other governors around the country saw the values golf could provide as a safe form of outdoor activity. As we reopened Makefield Highlands, we took that responsibility very seriously. Spirit Golf's Mike Attara and the club's General Manager, Ed Gibson worked closely with the township and golf industry allied association to develop our Park and Play Procedures. Upon re-opening and continuing today, in the Green Phase, we continue to provide touchless transaction, increased tee time intervals, increased cleaning schedules and have added social distancing and physical barriers in an effort to provide a safe and comfortable atmosphere for our residents

and guests to golf and dine. As you can imagine, having 150 acres to spread out and an expansive outdoor patio and open style clubhouse does make for an inviting atmosphere, never mind the amazing views and vistas of the golf course! So remember, you're invited to enjoy all that is Makefield Highlands!

As the summer is upon us, we are looking forward to pick back up on many of our dining and golf programs. Friday Night Music Specials, Summer Camps and our Makefield Golf Association events are all back on the calendar. Chef Mark Miller, known for his amazing grilling will be back outdoors providing weekly grille specials.

During the Yellow Phase when we were permitted take-out only, we created an affordable and delicious Take Out Menu, which has been a big hit! We are happy to announce we will continue to provide take out options now as part of our regular menu offerings. In addition, we have expanded the outdoor patio seating capacity and service which also offers some fabulous views of the course. Now that we are back in green phase our indoor clubhouse is re-open including the golf shop, bar and grille. One of the nice things about the clubhouse is it's open floor plan that makes for a great location for lunch and dinner. Hours are back to full schedule with lunch daily from 11am on and dinner service from 4 till 8pm. Our small plates and full menu are again available for your dining pleasure. Check out the new website for specials and upcoming events and music nights at <https://makefieldspublichouse.com/>



On the golf side of the clubhouse we look forward to kicking back off our 2020 golf association event series. It's not to late to join the fun and participate. Come enjoy some fun competition in single and team formats.

The 2020 Makefield Highlands Golf Association



## Mission Statement

Our mission at Makefield Highlands is to create an enjoyable atmosphere and experience for our guests. While having competitive events on the course is fun, our primary goal is to have a pleasurable atmosphere after the round where food and prizes are shared amongst friends. Please join us for the 2020 season at Makefield Highlands.

**ONLY \$179**

\*Green & Cart Fees are not included

**MHGA golf association will start up again on Saturday, July 11th!**

Looking forward to getting back in action.

Go to our website to learn more at:

<https://makefieldhighlandsgolf.com/2020-mhga/>



Makefield Highlands Golf Academy is underway with junior and adult summer camps and clinics. Junior golf coordinator, Joe Garstka has been working diligently to reorganize schedules and of course following CDC guidelines and PGA of America safety protocols to make sure All Juniors and Team members are safe and having fun! For the full schedule check out our website at:

<https://makefieldhighlandsgolf.com/golf-academy/>

**Golf Course Updates** – During the downtime, our course superintendent Mark Peterson and his Team continued to maintain the course in pristine condition. The crew was limited but worked hard to maintain the course and complete our aeration and spring cultural practices. Upon re-opening we have again picked back up on the bunker project and are very pleased to get the work completed on 8, 10 and 16 this season.



**Remember, you are always invited to come on out  
and enjoy all that is Makefield Highlands!**

MAKEFIELD HIGHLANDS • 1418 WOODSIDE ROAD • YARDLEY, PA • 215.321.7000



**OPEN TO THE PUBLIC FOR GOLF 7 DAYS A WEEK  
GREAT GOLF AND SO MUCH MORE!**

**One of Pennsylvania's Premier Public Golf  
Courses, here in Lower Makefield Township.  
A great place to enjoy golf and be out in the  
great outdoors.**

**Don't forget we also have one of the top  
50 driving ranges in the country, and check  
out our fully stocked Pro Shop.**

**MAKEFIELDHIGHLANDSGOLF.COM  
215.321.7000**

1418 Woodside Road • Yardley, PA 19067

MAKE FRIENDS      MEET FRIENDS

Check Out Our New Summer Menu!      Enjoy Our Fresh Air Dining! Patio & Deck!

**MAKEFIELD'S PUBLIC HOUSE**

**NEW SUMMER MENU!**  
**Happy Hour Thursday-Sunday / 5pm-8pm**  
**Lunch Daily 11am - 3pm**  
Grab & Go and Curbside Pick Up always available.  
Following CDC Guidelines



August 14th and 28th live music 5-8pm (fresh air dining on our patio and deck)  
August 15th Makefield Highlands Golf Association Event  
(must be an association member to participate)

FOLLOW US!  
@on instagram @makefields on facebook @Makefields

**1418 WOODSIDE ROAD - YARDLEY, PA  
215.321.7000 - MAKEFIELDSPUBLICHOUSE.COM**

Located on the Grounds of Makefield Highlands Golf Club





## Parks & Recreation

### Vision:

Cultivating health, happiness and community

### Mission:

**HEALTH:** Improve physical health, mental health and overall quality of life by offering safe and accessible facilities and open space.

**ENVIRONMENT:** Act as environmental stewards through responsible use of the natural environment and protect and maintain Parks and Recreation assets.

**COMMUNITY:** Create opportunities for the community to connect through a wide variety of partnerships, programs, events and classes.

## Parks and Recreation in a COVID-19 Environment

Redefining the field of parks and recreation as an essential, vital necessity.

Since 1985, America has celebrated July as the nation’s official Park and Recreation Month. Created by the National Recreation and Park Association (NRPA), Park and Recreation Month specifically highlights the vital and powerful role local park and recreation professionals, such as our staff at Lower Makefield Township, play in conservation, health and well-being, and social equity efforts in communities across the country.

The services that park and recreation professionals provide are vital for our communities — from protecting open space and natural resources, to providing fitness programs, and, recently, providing essential services throughout the COVID-19 pandemic — Park and Recreation Month encourages everyone to reflect on the exponential value park and recreation professionals bring to communities.

In Lower Makefield Township, you can celebrate Park and Recreation Month by participating in our virtual classes, visiting our drive-up movies, visiting our car shows, and participating in a variety of contests throughout the month.

“July is when we highlight our Community Parks and Green Space and all of the programs the Parks and recreation department provides right here in Lower Makefield Township.” said Monica Tierney, Parks and Recreation Director. “It is our mission to provide opportunities to improve the physical and mental health of our residents, conserve and protect our environment, and provide opportunities for the community to engage and connect.”

Lower Makefield Township is leading initiatives and providing opportunities for people of all ages to achieve healthier lifestyles, promote and understand nature and conservation as well as bringing the community closer through a variety of programs and services. We strive to improve and grow every year and provide the best service to Lower Makefield Township.

NRPA encourages everyone that supports parks and recreation to share how it has impacted their lives with the hashtag #WeAreParksAndRec. For more information about Park and Recreation month, visit [www.nrpa.org/July](http://www.nrpa.org/July).

NRPA also encourages people to get creative throughout the month by participating in the Thank a Park and Rec Pro contest. Film a video thanking a park and recreation professional in your community for the services they provide and post it on social media using the hashtag #ThankAParkAndRecPro for a chance to win prizes throughout July.

### Parks and Recreation Board

- o Douglas Krauss, Chair
- o Michael Brody, Secretary
- o Michael Blundi, Member
- o Patricia Bunn, Member
- o David Malinowski, Member
- o Kim Rock, Member
- o Dennis Wysocki, Member

# WE ARE PARKS AND RECREATION



### WHY WORK WITH US?

- Be Your Own Boss
- Enjoy Outside Sales Independence
- Proven Products
- Flexible Schedule
- Generous Commissions

**NOW HIRING!!!**

**Rewarding Work That Fits Your Life!**

Call for Information 215-257-1500 x106  
Email your resume to [gregory.cbn@gmail.com](mailto:gregory.cbn@gmail.com)

# What is happening in the Green Phase?

## Leagues

Leagues will need to be permitted by the Township Parks and Recreation Department and will be required to submit their return to play protocol to the Township.

### No league may return to the field until:

1. They have a plan in place.
2. It has been approved by the Township
3. The Township submits the plan to Bucks County Department of Health for their approval.
4. Permits have been issued.

#### PLEASE NOTE:

During this time of COVID-19 and the Township's reduced staffing, our capabilities for maintenance have been reduced. Please see what services will be available during this time.

### What will be available:

- Port-o-potties (cleaned weekly by the vendor)
- Mowing of all Township Parks
- Weed whacking (may be delayed)
- Emergency and safety repairs
- Trash removal
- Lights

### What will not be available:

- Permanent bathroom structures
- Concession stands
- Water Fountains
- Our staff will not be able to do special projects.

- Our staff cannot do regular infield maintenance.

### Parents and Participants:

Please come equipped with sanitizer, and disinfecting wipes and follow all protocols set forth by your league or organizing body. Please see below for further information.

## Pickleball



All players should play using the safe play guidelines outlined on this website. We are providing a modified schedule in order to prevent crowding at the pickleball courts. Please note that this schedule can be modified.

Our meet up site is: <https://www.meetup.com/Morrisville-Playing-Pickleball-Meetup/>

### SATURDAY

- 8:00 AM to 9AM Intermediates and above
- 9:00 AM to 10:30 AM All Play Beginners welcome

### SUNDAY

- 9:00 AM to 11 AM Intermediates and above

### TUESDAY

- 9:15 to 11:15 AM All play

### WEDNESDAY

- 5:30 to 7:30 PM Intermediates and above

### THURSDAY

- 6:00 PM to 7:30 PM All play Beginners welcome

*continues on next page*

PA018147

**JMTawnings**  
215-659-5239  
www.jmtawnings.com

The Quality, Reliability & Experience You Expect

perfecta® Retractable Fabric Awnings Manufactured Locally

RECOMMENDED BY SKIN CANCER FOUNDATION

ADURA MAX

waterproof noiseproof oops-proof

6" x 48" planks with a lifetime stress-free warranty, designed to coordinate with today's decor and to stand up to all of life's messes.

35 Swamp Road, Newtown, PA 215-357-0909

HOLLAND FLOOR CARE & RESTORATION

MANNINGTON RESIDENTIAL

Carpet - Hardwood - Laminate - Vinyl  
Stair Runners - Tile - Stone  
Backsplashes - Bathrooms - Area Rugs

www.HOLLANDFLOOR.com

OUR LOW PRICES WILL FLOOR YOU

FREE NO OBLIGATION ESTIMATES

SPEND THIS AD FOR \$100 OFF

THE MANNINGTON FAMILY

# What is happening in the Green Phase? *continued*

## Playgrounds

### COVID – 19 Precautions

Playgrounds and benches are high contact areas and are not sanitized. Play at your own risk.

We strongly recommend continuing precautions such as social distancing, washing hands and masking.

Please abide by the following guidelines for slowing the spread of Covid-19:

- Maintain at least a six-foot distance from those not in your immediate household.
- Cough and sneeze into your elbow.
- Wash your hands often with soap and water or sanitizer with at least 60% alcohol.
- Sanitizer will not be available at the playground so please bring your own sanitizer.
- Stay home if you are sick.
- Avoid touching your eyes, nose, and mouth.

## Dog Park

Yellow and Green Phase

### COVID – 19 Precautions

- Arrive, Play and Leave – Groups may not congregate before or after using park.
- Maintain a safe social distance from other members of 6 feet.
- No more than 10 people per section (large and small) of the dog park
- Wait in car if park already has 10 people.

- Wait in car if another member is entering or exiting to avoid congregation in the entry on leash area.
- Masks are recommended.
- Registered members only.
- Stay home if ill, if potentially exposed to COVID-19, or if your dog is sick.

## ALSO OPEN

(Maintain social distance of six feet, Wear masks in big crowds, sneeze into your elbow and sanitize and wash your hands frequently.)

- Basketball
- Tennis
- Volleyball
- Fred Allan Softball
- Caiola Baseball
- Stoddart Baseball
- Macclesfield Park
- Veterans Park
- Community Park

## DO NOT PARTICIPATE

- If you are exhibiting symptoms of COVID-19.
- If you are sick at all (cough, shortness of breath, headache, runny nose, loss of taste/smell, diarrhea, etc.).
- If you have been in contact with COVID 19 in the last 14 days.
- If you have any underlying health conditions or have a compromised immune system.
- If you feel uncomfortable.
- If it is crowded.

With 28 miles of bike trails that connect parks, sports fields, the 5-Mile Woods Preserve, the 9/11 Memorial Garden of Reflection, The LMT Pool, and the Dog Park, there are many opportunities for people (and dogs!) of every age and ability level.

The Lower Makefield Township Parks and Recreation Department is located at the new Community Center and is open to the public, Monday-Friday from 9am-3pm, for discount ticket purchases, field or pavilion rental requests, and to sign up for programs like the ones you will find within this guide.

You can also register ONLINE! for The Pool, the Dog Park, field and pavilion permit requests, as well as classes and programs. These opportunities can be found at:

[REGISTER.COMMUNITYPASS.NET/LOWERMAKEFIELD](https://REGISTER.COMMUNITYPASS.NET/LOWERMAKEFIELD)

(If you already have an account for The Pool, Dog Park, or from a previous class, please sign in using the same account!) For questions or feedback, please call 267-274-1110 or email [prinfo@lmt.org](mailto:prinfo@lmt.org).





# LMT Sport League & Recreation Opportunities

## LMT Youth Committee

Our LMT Youth Committee is comprised of teenagers from the Township that are interested in making a positive change within our community. They offer different programs and volunteer opportunities. If you are interested in joining or getting involved, please visit [LMT.org/government/departments/parks-recreation](http://LMT.org/government/departments/parks-recreation) or email [lmtyouthcommittee@gmail.com](mailto:lmtyouthcommittee@gmail.com) for more information.

### LMT Seniors - Age: 55+

Various programs and trip opportunities. Visit [lmt.org](http://lmt.org) or stop by the LMT Community Center for more information.

### Baseball, Softball & T-ball

- Pennsbury Athletic Association (PAA) T-ball, softball, baseball; age 4 to 18, 215-736-9550 <http://www.paaball.com>
- Morrisville Little League (MLL)M/F, baseball/softball, ages 4 to 16 [morrisvillelittleleague@gmail.com](mailto:morrisvillelittleleague@gmail.com)
- Lower Bucks Softball Association Adult softball league; Pennsbury school district locations 215-750-1109

### Basketball

- Pennsbury Regional Basketball League (PRBL) Male/Female Grades K to 11, Travel and instructional 215-369-7725 | [www.prbl.org](http://www.prbl.org)
- Lady Falcons Elite Hoops Female, grades 2 to 12; biddy ball. Developmental league with travel and in-house programs [ladyfalconselitehoops@gmail.com](mailto:ladyfalconselitehoops@gmail.com); [www.leaguelineup.com/welcome.asp?url=lfehoops](http://www.leaguelineup.com/welcome.asp?url=lfehoops)

### Camps & Enrichment Programs

- Bucks County Community College Male/Female, ages 4 to adult. Various enrichment programs/camps. 215-968-8409 [www.bucks.edu/kidsoncampus](http://www.bucks.edu/kidsoncampus)
- Bucks County Parks & Recreation Male/Female, ages 4 to adult. Various programs. 215-757-0571

- Pennsbury School District Community Services School district locations; Adult Programs 215-428-4100

### Fitness

- YMCA – Morrisville & Fairless Hills Roller hockey, various programs 215-736-8077 or 215-949-3400
- Newtown Athletic Club Various indoor sports programs; M/F 215-968-0600

### Football

- Lower Makefield Football Association (LMFA) Ages vary, flag/tackle [info@lmfafootball.org](mailto:info@lmfafootball.org)

### Lacrosse

- Lower Bucks Lacrosse League (LBLL) Lacrosse, instructional & travel. Male/Female, Grades 3 to 8 215-914-1100 Ext.4653 <http://lowerbuckslacrosse.org/>

### Rugby

- Yardley Makefield Rookie Rugby-USA Coed clinics for grades K-4; and coed league play for 5th and 6th graders; summer program 215-495-7773 [ymrookierugby@gmail.com](mailto:ymrookierugby@gmail.com); [www.ymrrc.org](http://www.ymrrc.org)

### Soccer

- Yardley Makefield Soccer (YMS) M/F Ages 4 – Adult; Travel & Intramural <http://www.ymsoccer.net>

### Swim & Dive

- The Pool at LMT – Swim & Dive Team and Program Male/female, Competitive, recreational, and dive options [www.lmtswim.com](http://www.lmtswim.com)
- Penn Aquatics Male/female all ages; program at Pennsbury High School field house [pennregistrar@pennaquatics.com](mailto:pennregistrar@pennaquatics.com) [www.pennaquatics.com](http://www.pennaquatics.com)

### Tennis

- Yardley Makefield Tennis Male/Female, ages vary; clinics, camps, lessons 215-295-0558 [www.YMTennis.com](http://www.YMTennis.com)
- Pennsbury Racquet Club Indoor tennis courts, multi-purpose sports room, fitness facility, camps 215-736-0248 [www.pennsburyrac.com](http://www.pennsburyrac.com)



# Digital Recreation Opportunities

Some of our instructors are donating time to offer free online classes. Our updated schedule is below.

All classes will be held via Zoom. To create a free Zoom account and download the app, go to [www.zoom.us](http://www.zoom.us). If you need help, please email [prinfo@lmt.org](mailto:prinfo@lmt.org) or call 267-274-1110.

Our current class schedule and Zoom meeting information is as follows:

## Tuesday:

### 10:30am Watercolor Art Class with Chris Monteiro

Join Zoom

URL: <https://us04web.zoom.us/j/680853683?pwd=MVdQZmdvcFFSSW5ETXVqZTYybndpUT09>

Meeting ID: 680 853 683



## Wednesday:

### 9:00am Zumba Toning with Rachel Carlson (until end of July) Join Zoom

URL: <https://us04web.zoom.us/j/655387259?pwd=RWZTeGw3US82MUxPTHhsU3cwUUkxQT09>

Meeting ID: 655 387 259

### 10:00am Beginner Mat Yoga with Maria Campbell

Join Zoom

URL: <https://us04web.zoom.us/j/957897346?pwd=N1ZUVy9yQ0FGSno1d0FSSkNLSURZZz09>

Meeting ID: 957 897 346

### 11:00am Gentle Yoga with Linda Thiel

Join Zoom URL: <https://us02web.zoom.us/j/87046585072>

Meeting ID: 870 4658 5072

## Thursday:

### 10:00am Chair Yoga with Maria Campbell

Join Zoom

URL: <https://us04web.zoom.us/j/968345458?pwd=UkZlWjUvejhVUzVGQUJlRzRVS0lvQT09>

Meeting ID: 968 345 458

### 6:30pm Zumba Toning with Betsy Beltle

(until the end of July)

Join Zoom

URL: <https://us02web.zoom.us/j/89276933276>

Meeting ID: 892 7693 3276

## Friday:

### 9:00am Zumba Gold with Rachel Carlson (until end of July) Join Zoom

URL: <https://us04web.zoom.us/j/671735300?pwd=d3BpT3lwZ2UvcWJWVjFXRWc2bExwdz09>

Meeting ID: 671 735 300

### 10:30am Watercolor Art Class with Chris Monteiro

Join Zoom

URL: <https://us04web.zoom.us/j/680853683?pwd=MVdQZmdvcFFSSW5ETXVqZTYybndpUT09>

Meeting ID: 680 853 683

Password: 460449



Our instructors are hosting these classes free of charge. If you would like to leave a tip for their services of any amount, please use our township Venmo (@LowerMakefield-Township) or send a check, made out to the instructor, to 1100 Edgewood Road, Yardley PA 19067. We will mail it directly to them. Please leave a note for which instructor the tip is for. All proceeds go to the instructor of your choice.

\*Please Note: Viewers assume the risk of physical injury from any activity related to this programming. The Township of Lower Makefield and your instructors do not insure against injury that may result from activity related to this programming, and do not guarantee results. Viewers who participate do so voluntarily. Viewers who participate should consult with a medical professional before engaging in the activity.\*

## LMT Dog Park

Registration information: REGISTER.COMMUNITYPASS.NET/LOWERMAKEFIELD

- Residents: \$35 / for one (1) dog; \$15 for each additional dog, per year
- Non-Residents: \$50 / for one (1) dog; \$15 for each additional dog, per year

Register online for a free upcoming dog park orientation class. After the class is complete, residents can register and pay online, and bring shot records, PA dog license receipts, and the certificate from completing the class to the LMT Community Center (1550 Oxford Valley Road) or email to [dogpark@lmt.org](mailto:dogpark@lmt.org)

Upcoming Orientation Classes

Thursday, August 6 @7pm

Refer to Community Pass for additional dates. Orientation is held at Kid's Kingdom Pavilion and limited to 20 participants in each class until further notice.

## Park Bench Donation Program

This program is designed to update and improve the benches in our parks, fields, etc., while allowing community members to dedicate something lasting in memory of a loved one, or a community group to sponsor and support the Township.

Please visit [LMT.org/government/departments/parks-recreation](http://LMT.org/government/departments/parks-recreation) to purchase or for more information.

## LMT Event Sponsorship Opportunities

LMT hosts a variety of special events within the Township, throughout the year. We have created sponsorship opportunities to allow for resident and corporation support, in order to make these events bigger, better, and more frequent. Please call 267-274-1110 to inquire about our sponsorship packages, as well as upcoming opportunities.

## Park Pavilion Permit Requests

In LMT, we have two pavilions available for private parties and events. Kid's Kingdom at Community Park has a covered pavilion with capacity for ~30 people. Memorial Park has a covered pavilion next to the Secret Garden Playground with capacity for ~20 people. Both pavilions have \*bathroom, playground, grilling, and picnic table access.

COVID-19 Modification: Please understand that social distance measures should be followed during the COVID-19 Pandemic. Bathrooms will be limited to one port-a-potty, public bathrooms will not be available. Please be sure to bring your own sanitizer and wipes with you as they may not be available to you when you arrive. Rentals are \$10/hour plus a refundable \$50 security deposit check to hold the reservation. Reservations can be made online using your Community Pass account.



## Welcome to Lower Makefield Township Parks and Recreation

### Create an Account

CommunityPass is your resource for Lower Makefield Township Parks and Recreation. To begin, click the sign-up link above, complete the sign-up form and enjoy the convenience of online registration! Once your account is created you will receive an email that contains your login information. Be sure to keep this email in a safe place so that you can continue to enjoy the convenience of online registration. **Please add [prinfo@lmt.org](mailto:prinfo@lmt.org) to your email safe list to ensure delivery of email confirmations and receipts.**

To view our current program guide please [CLICK HERE](#)

[Create an Account](#)

*Please Note: If you already have a CommunityPass account from another organization or community, please use your existing username and password to log in and register for programs offered through this organization. You do not need to create a new account.*

### Existing Users

#### Please Log In

Username

Password

[Log In](#)

[Forgot username or password](#)

[Need Help?](#)





# **LMT's** **camp in a bag**

**Your weekly summer fun in a bag  
to use at home.**

**\$25/week or  
\$175 for all 8 weeks**

Includes weekly crafts, activities, prizes, and all supplies to complete them!  
Your first bag will be a drawstring bag with start up supplies and that  
week's activities.

**Weekly bag pick up will be held on Mondays  
8am-4:30pm.**

**To purchase, please call 267-274-1111  
or email [veronicag@lmt.org](mailto:veronicag@lmt.org)**





**DRIVE IN MOVIE**  
**AUGUST 21 | MOVIE TBA**  
**AUGUST 22 | MOVIE TBA**

TICKETS  
[WWW.MAEGAV.COM](http://WWW.MAEGAV.COM)

**MID ATLANTIC**  
EVENT GROUP



**MEMORIAL PARK**  
**1950 WOODSIDE ROAD**  
**YARDLEY, PA 19067**



# Spotted Lantern Fly

## *Lycorma delicatula, Invasive, Non-Native, Destructive*



The PA Department of Agriculture (PDA) has declared the Spotted Lantern Fly (SLF) to be “dangerous and destructive to the agriculture, horticulture and forests of this Commonwealth and is hereby declared a public nuisance.” On May 26, 2018 the PDA placed all of Bucks County under an updated quarantine order to stop new infestations and slow the spread of the Lantern fly.

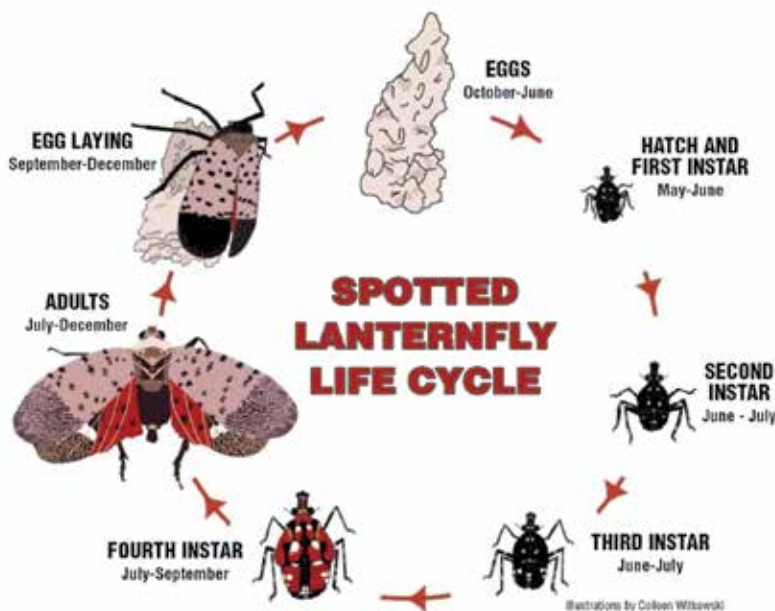
Spotted Lantern Fly feeds by sucking sap which stresses the tree and can leave it vulnerable to attack by other insects. The SLF also excretes large amounts of sticky ‘honeydew’ that causes mold to grow on the tree and can attract swarms of other insects that, in areas of large populations, can affect outside activities.

The SLF will feed on a variety of trees, however, all life stages of the SLF prefer feeding on its favorite host, the Tree of Heaven (*Ailanthus altissima*). The Tree of Heaven is an invasive native of China and looks similar to Sumac. It is highly recommended that homeowners eradicate these trees from their property. The following links provides assistance in identifying the Tree of Heaven and management guidance for homeowners.

<https://extension.psu.edu/identifying-tree-of-heaven-and-some-native-look-a-likes>

<https://extension.psu.edu/spotted-lanternfly-management-for-homeowners>

The Spotted Lantern Fly completes one life cycle per year. Nymphs begin to emerge in late April.



The following are additional steps you can take to help control and eradicate SLF

1. Report sightings of SLF to: online at <https://extension.psu.edu/spottedlanternfly> or call 1-888-4BAD-FL
2. Trap Spotted Lanternfly nymphs and adults on a tree by banding it with sticky tape
3. Before leaving any area that is known to have Spotted Lanternfly, you should check your vehicle to make sure you aren't taking any to your next location.
4. Destroy SLF in any of its stages
5. Remove egg masses by scraping with card, knife, or stick. Scrape into a bag or container with rubbing alcohol or hand sanitizer

<https://spottedlanternflykillers.com/>

Sources and more information:

<https://extension.psu.edu/spotted-lanternfly> info on quarantined Counties, management for homeowners including how to remove eggs, tree banding and much more

<https://ag.umass.edu/landscape/fact-sheets/spotted-lanternfly> - provides a good list of trees preferred by the Lantern fly.

[https://www.agriculture.pa.gov/Plants\\_Land\\_Water/PlantIndustry/Entomology/spotted\\_lanternfly/Documents/Spotted%20Lanternfly%20Property%20Management.pdf](https://www.agriculture.pa.gov/Plants_Land_Water/PlantIndustry/Entomology/spotted_lanternfly/Documents/Spotted%20Lanternfly%20Property%20Management.pdf)

<https://buffalo-niagaragardening.com/2018/05/22/spotted-lanternfly-slf-can-damage-plants-please-report-sightings/>

[https://www.agriculture.pa.gov/Plants\\_Land\\_Water/PlantIndustry/Entomology/spotted\\_lanternfly/Documents/Spotted%20Lanternfly%20Facts.pdf](https://www.agriculture.pa.gov/Plants_Land_Water/PlantIndustry/Entomology/spotted_lanternfly/Documents/Spotted%20Lanternfly%20Facts.pdf)

**For businesses, agencies, and organizations,** a Spotted Lanternfly permit is required for those located or working within the quarantine, who move vehicles, products or other conveyances within or out of the quarantine.





Edgewood Village Shopping Center  
635 Heacock Road  
Yardley, PA 19067  
215-493-9616



**1000's of  
Organic &  
Specialty  
Products**

## **Stop By & Check Out Our Full-Service Departments!**

**Fresh Produce**

**Bakery**

**Sushi**

**Seafood**

**Butcher Shop**

**Hot Bar**

**Soup Bar**

**Floral**

**Prepared Foods**

**Deli**

**Salad Bar**

**Java Jim's Coffee**

**Gourmet Cheese**

**Beer & Wine**

[www.mccaffreys.com](http://www.mccaffreys.com)



# Which Basin is in My Neighborhood?

## Lower Makefield Township MS4 Public Education Series

### BMPs in Lower Makefield Township?

BMP stands for Best Management Practice and is the all-encompassing term Engineers use to describe various methods meant to manage, control, and treat stormwater runoff on active construction sites, land development projects, utility yards, and even a residential property. There are many types, but basins are a common surface level practice and in Lower Makefield there are over 100 Stormwater Management Basins. A vast majority of the basins in Lower Makefield Township are Detention Basins (or basins designed to control flooding). There are also Retention Basins which are designed for retaining stormwater on site and infiltrating it into the ground. Some retention basins have permanent pools which can be observed as either Ponds, or wetlands. Lastly, the Township also has several Rain Gardens which also provide a water quality function on a typically smaller scale than Retention Basins.

Basins can often look very similar to the untrained eye, but it is important to know which kind of basin is in your neighborhood and the functions they serve. This article will discuss how to distinguish between a rain garden (Bioretention Facility), a water quality basin (Retention Pond), and a flood control basin (Dry Detention Basin).

### What is a Rain Garden?

Rain Gardens can vary in size depending on their application, but can sometimes be nothing more than a small depression planted with native shrubs, perennials, and flowers in a specific order meant to create storage for stormwater runoff and to treat it in the process. They generally treat small drainage areas and usually have no outlet structure to pipe flow into a stream, as rain gardens are designed to infiltrate runoff into the ground. Location selection is a key design component as the location shall be downgrade of impervious areas and in an area where soils will readily infiltrate water. A major key to every successful rain garden is a properly established planting plan of native species. This can generally take 6 months to a year for plants to become established in a rain garden.

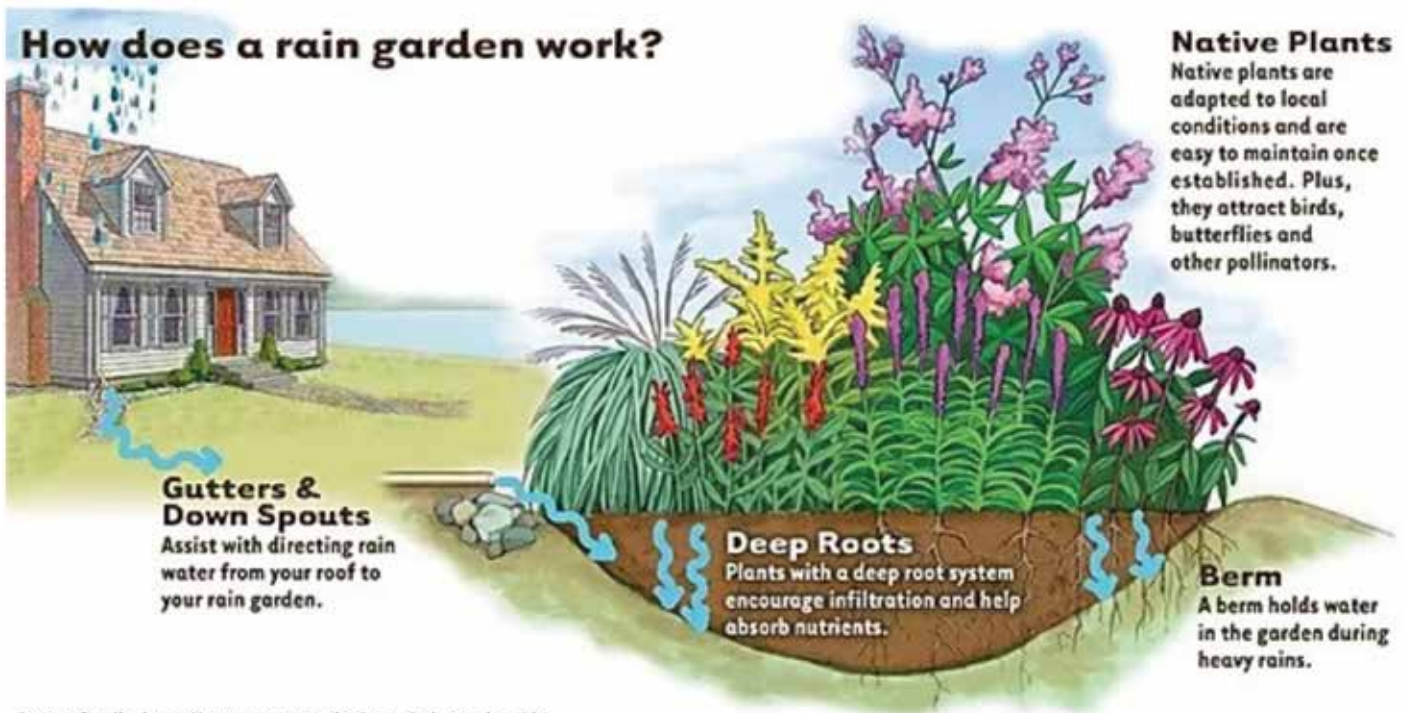


Image Credit: <https://www.mywatersheds.org/rain-garden-101>

*continued on next page*

# Mixed-Use Overlay Information

The Township will hold a public hearing for the proposed Mixed-Use Overlay District Zoning Ordinance Amendment on Monday, August 17 at 6:30pm. This ordinance if adopted would allow for a combination of commercial and residential uses in the Office Research District (in addition to those uses already permitted), similar in scope to the proposed Prickett Preserve at Edgewood development (containing Wegmans) that has been presented to the public several times over the past year.

The proposed ordinance amendment has been submitted to the Township and County Planning Commissions to provide

them an opportunity to submit their recommendations prior to the hearing. The public notice containing the date and time of the public hearing will be advertised twice in the newspaper, and also posted on the Township website, Facebook and Twitter pages, and at the front door to the Township Building.

The proposed ordinance, plans and reports are available on the Township website at [www.lmt.org](http://www.lmt.org)

<https://www.lmt.org/2020/05/21/bos-special-meeting-june-4-2020-7-pm-mixed-use-overlay-ordiance-discussion/>, and information is also on display at the front door to the Township building.

## What is a Water Quality Basin?

Water quality basins (or Retention Ponds), sometimes just called a wet pond, or a stormwater management pond, are surface depressions that retain stormwater runoff on site. The key component to these types of basins is that it is an artificial pond that is meant to have a permanent pool of water and there is typically vegetation around the perimeter. All basins have a mechanism for overflow to be conveyed to the streams within the Township. For water quality basins, that mechanism is typically a structure within the basin with an opening in it that is set at a predetermined height above the bottom of the basin, the area below that opening would then either become a permanent pool of water or would infiltrate into the ground and replenish the groundwater. Thus, water is retained on the site of the development and sediment within the stormwater runoff settles to the bottom while other pollutants such as oils and surfactants can float to the top. This results in cleaner water discharging from the pond and being allowed to enter into the local hydrology system and often directly into a local waterway.



*(Water Quality Basin at the Freeman's Farm Development on Big Oak Rd)*

## What is a Flood Control Basin?

Flood Control Basins are Dry Detention Basins, also known as holding ponds, or dry ponds. They are often installed along or adjacent to tributaries of rivers, streams, lakes or bays to protect against flooding by allowing temporary storage of water during storm events.



*(Basin along Lindenhurst Rd.)*

This type of basin is predominantly meant to deal with excess volumes of stormwater and unless they have a permanent pool feature, they do not typically provide much benefit for water quality. Similar to Wet Retention Ponds, Dry Detention Basins have an outlet structure that discharges flow to a stream. However, in a dry detention basin, the opening in the outlet structure is located at the bottom of the basin so that it can eventually drain out completely. Dry Detention Basins should be completely drained within 72 hours otherwise, standing water without proper perimeter control is a drowning hazard and can lead to mosquito infestation. As with all stormwater features, any water that does not naturally infiltrate through the ground will make its way to a local waterway.

Over the next decade, municipalities throughout Pennsylvania will be working towards converting these dry detention ponds to include a water quality component. This conversion would involve raising the opening in the outlet structure to allow some stormwater to be retained on site and infiltrate into the ground. However, this conversion can only be completed on basins

which have enough storage volume to accommodate both the water quality and flood control components of the basin. The Township is currently in the process of selecting which basins fit this criteria.



# WELLNESS CHECKS

**Lower Makefield Township is calling seniors and anybody who has a special need for wellness checks. These calls will be ongoing through this COVID-19 crisis.**

To be added or to add someone to the list:  
**Email: [cholmes@lmt.org](mailto:cholmes@lmt.org) or Call: 267-274-1110**

Information needed to be added to the list:  
Name, address, and phone number.

We will also be posting resources on our COVID-19 page please visit [lmt.org](http://lmt.org) for the most up to date information.





## Q. I would like to install a fence and a shed. Do I need a permit?

Yes, a zoning permit is required. Construction details and a copy of a survey drawing showing the location and size of the improvement is required. Stormwater Management calculations may also be required.

## Q. Do I need a permit to do renovations to my home?

Building Permits are required for most work involved in renovation projects; including any work on existing or new electrical, plumbing and mechanical (HVAC) systems. Please feel free to stop in, call us at 267-274-1120 or email any questions to [permits@lmt.org](mailto:permits@lmt.org) so we can assist you.

## Q. What approvals do I need to build an addition to my home?

A plan showing the location and size of the improvement is required to verify that the addition complies with the Township's Zoning requirements for setbacks and impervious surface coverage.

- If it doesn't comply, a variance would be required from the Zoning Hearing Board.
- If it does comply, you will also need a building permit; including electrical, plumbing and mechanical (HVAC) subcodes, where applicable. Stormwater Management calculations are also required.
- If your property is located within the Edgewood Village Historic District, a Certificate of Appropriateness will be required for any part of a structure that is visible from the public way. The Edgewood Village Design Guidelines are available at the Township Building or our website.
- If your property is in flood zone, you will need an Elevation Certificate and all work must comply with Zoning Section 200-53 through 200-59 of the Township Code related to Floodplains.

## Q. What information does the Township have for my property?

The Township maintains records of building permits for properties going back to 1939. These records may include surveys, site plans, building plans and other useful information that may be available digitally. If you're looking to do a project and need information, please call or email us your request for information.

## Q. Can I cut down trees on my property?

An individual property owner need not obtain a permit to cut a tree or trees as part of normal home maintenance and upkeep for removal of:

- Diseased or dead trees, or trees that constitute a danger.
- Up to five trees per acre per year (not to exceed a total of 10 trees) that are 12 inches or more inches in diameter. This does not include trees located within protected areas (e.g. conservation areas, wetland/watercourse buffers, steep slopes).

Trees are a valuable resource, so please check with us if you have any questions about tree removal.

## Q. There is a dead tree near the street in front of or behind my house. Am I responsible for removing it?

Yes. Just as maintenance of the sidewalk and curbs are the property owner's responsibility, so is the maintenance and removal of trees.

## Q. My neighbor has bamboo that is growing into my property, what can I do?

The planting of bamboo is now prohibited unless there is a barrier to contain the root system and prevent encroachment onto neighboring properties, Township property, roads, and sidewalks. If you discover bamboo encroaching on your property from a neighboring property, you must advise that property owner of your objection to the encroachment of the bamboo in writing or you will be responsible for it. Read Chapter 84A of the Township Code for more information.

## Q. What can I do if I believe a property is not properly maintained or is in violation of an ordinance?

Code Enforcement is responsible for the enforcement of many adopted Township Codes and Ordinances; including brush, grass, weeds, bamboo, graffiti, blighted and vacant properties, property maintenance, and zoning. You can report any complaints to the Township Code Enforcement Officer (the source of all complaints remains anonymous). Nuisance violations, the abandonment of vehicles and unsafe building conditions are investigated to protect the health, safety and welfare of the public.



## Community Day 2020 Cancelled

The Lower Makefield Township Community Day 2020, that was originally scheduled for August 29, has been cancelled in its entirety due to the COVID-19 virus. "We simply cannot offer any version of the event that people have come to expect" said Monica Tierney Director of Parks and Recreation. "We have reviewed several different scenarios, but none would meet the expectations we have set for several years." Community Day takes a considerable amount of planning and attracts a large crowd of 4,000-6,000 people each year.

"While it is disappointing that we will be cancelling Community Day, it has been great to watch my staff come up with new and creative ways to operate in this COVID environment" Tierney said. "I look forward to the many smaller events they have planned and the opportunity to partner with new groups and organizations as we prepare a new summer schedule."

In place of Community Day, we will have a number of smaller events throughout the summer. This is a great way to bring the Township together in a safe and manageable way. Events we have already reviewed with the County Department of Health are regular small car shows and drive-in movies. We also plan to review



a small vendor fair at the end of August that will host many of the small business who have been struggling during the COVID-19 crisis. We are still also looking into hosting drive-in concerts, a possible haunted trail event in the fall, and a light up the park event in the winter.

"As long as we remain in the green phase we will continue to offer what we can to the public." Tierney said. "We will keep a close eye on the COVID -19 situation as we consider the remainder of our event season."

---

## Road Paving Progress

Over \$900,000 was approved by the Board of Supervisors for road paving and repairs of Township Roads for the 2020 season.

The 2020 Road Paving Project, which involves milling, selected base repair, and final roadway paving with curb ramps, where necessary, began at the end of May. Bids were received and opened on February 13, 2020 and the project was awarded to James D. Morrissey, Inc.

Heacock Road from Yardley Langhorne Road to Stony Hill Road; Cultipacker Rd; Flail Dr; Drill Dr; Combine Ln; Harvest

Dr; Silo Rd (from Combine to Harvest); Stapler Dr; Planter Dr; Farmal Ct; Reaper Ct; Rose Hollow Dr; Trellis Ct; Thrush Ct; Esther Ln, Jack Rd; and Milton Dr were all milled and overlaid.

ADA curb ramps and stormwater inlet repairs were also incidental to the project. The total length of Township Roads paved in the 2020 road paving program is 4.16 miles. Next year we are planning on paving about 3.7 miles of roads in accordance with year two of the road paving program presented in the 2020 budget.



# **Sewer Alternative Analysis**

## **EVALUATION AND ANALYSIS OF OPTIONS FOR THE MORRISVILLE MUNICIPAL AUTHORITY SERVICE AREA**

**June 25, 2020**

### **BACKGROUND**

Due to the fact Morrisville Municipal Authority's (MMA) Wastewater Treatment Plant (WWTP) has had compliance issues with its discharge permit, the Pennsylvania Department of Environmental Protection (PA DEP) required a corrective action plan from the MMA to address the compliance issues. The MMA, through their consultant, prepared feasibility studies in 2015 and 2016 on how to address this issue. The first step was for the MMA to perform two major upgrades (effluent filters and a new outfall pipe into the Delaware River) to their existing WWTP to bring the WWTP into compliance. This would allow for the sufficient time to allow for the long term planning and evaluation of options for the ultimate solution to the existing issues with the MMA WWTP to be completed by all of the users of the MMA WWTP. The MMA WWTP provides wastewater treatment service to Yardley Borough, Morrisville Borough, and portions of Lower Makefield Township.

The MMA's corrective action plan recommendation from its consultants and management team was for the construction of a new WWTP, rather than upgrade the existing WWTP. Due to the high construction costs of this recommendation, the PA DEP met with representatives of Lower Makefield Township and requested that they analyze all of Lower Makefield Township's alternatives and update their Act 537 Plan. The updated Act 537 Plan is required to discuss all of the alternatives analyzed and then adopt the selected alternative for providing a method for treatment and disposal of the wastewater from the portion of Lower Makefield Township that is currently being serviced by the MMA WWTP. Lower Makefield Township has over the past three years been in a process of evaluating options to select the best long term alternative for providing public sanitary sewer service to the portion of Lower Makefield Township that conveys its wastewater flows to the Morrisville Municipal Authority WWTP for treatment and disposal. The Lower Makefield Township public sanitary sewer system is owned by Lower Makefield Township.

### **LOWER MAKEFIELD TOWNSHIP EVALUATION PROCESS**

The Lower Makefield Township Board of Supervisors formed a Sewer Sub-Committee comprised of two members of the Board of Supervisors, two members of Sewer Authority and the Township Manager to meet with the Lower Makefield Township Wastewater Consultant (Ebert Engineering, Inc.)

to review the alternatives for providing public sanitary sewer service to this portion of Lower Makefield Township. The Board of Supervisors provided direction that the following alternatives be fully evaluated:

1. Upgrade of the Existing Morrisville Municipal Authority WWTP
2. Construction of a New WWTP at the US Steel Site
3. Conveyance of Flows to the Lower Bucks County Joint Municipal Authority WWTP
4. Conveyance of Flows to the Bucks County Water and Sewer Authority System

During the evaluation process, two additional options were identified that needed to be evaluated to have a complete evaluation of all alternatives so that the Board of Supervisors could make an informed decision on the best long term means to provide for sanitary sewer service to this area of Lower Makefield Township. The two additional alternatives were as follows:

1. Construction of a WWTP in Lower Makefield Township
2. Sale of the Sanitary Sewer System

The Sewer Sub-Committee met and discussed the evaluation of all options except for the sale of the sewer system. The outlines of each meeting that were prepared by Ebert Engineering, Inc. are contained as individual appendices and discussed in detail in the in the full summary report dated June 25, 2020. The following are the dates that each option was evaluated:

- August 23, 2018 - Goals and Objectives of the Evaluation Process
- September 27, 2018 - MMA WWTP Alternatives (Upgrade and New WWTP)
- October 25, 2018 - Conveyance to LBCJMA
- November 29, 2018 - Evaluation of LBCJMA Options and Comparison to MMA
- February 28, 2019 - Evaluation of New MMA WWTP (Updated)
- April 25, 2019 - Evaluation of LMT WWTP on Maccles Field
- April 25, 2019 - Evaluation of Conveyance to Neshaminy Interceptor (BCWSA)



It is noted that prior to Lower Makefield Township starting the formal review process through the creation of the Sewer Sub-Committee, the following evaluations were performed:

- MMA WWTP Feasibility Study - Corrective Action Plan prepared by Pennoni Associates, Inc. dated November 2015
- Supplement to the MMA WWTP Feasibility Study - Corrective Action Plan by Pennoni Associates, Inc. dated May 2016
- MMA Existing WWTP Site Alternatives (Power Point Presentation) by Ebert Engineering, Inc. dated July 27, 2017

- New MMA WWTP at the US Steel Property
- Lower Makefield Township WWTP at Macclesfield Park

The alternative for the upgrade of the existing MMA WWTP has been determined to not be implementable because the MMA will only consider the construction of a new WWTP at the US Steel Property. Since the MMA owns the WWTP and they will no longer consider this alternative, it cannot be considered an implementable option. The alternative to convey all of the flows to the BCWSA Neshaminy Creek Interceptor cannot be considered an implementable option because capacity does not currently exist in the Neshaminy Creek Interceptor under the PA DEP’s Connection Management Plan.

**SUMMARY OF COSTS OF VIABLE OPTIONS**

The summary of the costs presented below are for the alternatives that can be implemented at this time. The alternatives that were evaluated in the report include the upgrade of the existing Morrisville Municipal Authority (MMA) Wastewater Treatment Plant (WWTP), conveyance to Lower Bucks County Joint Municipal Authority (LBCJMA), construction of a new MMA WWTP on the US Steel property, conveyance to Bucks County Water and Sewer Authority’s Neshaminy Interceptor and the construction of a new Lower Makefield Township WWTP on Macclesfield Park. The alternatives that can be implemented at this time are as follows:

- Conveyance to LBCJMA

While all of the above described alternatives were fully evaluated in the summary report, only the alternatives that can be implemented at this time should be considered by the Lower Makefield Township Board of Supervisors when selecting an alternative.

The costs for each implementable alternative are presented in terms of capital costs and user fees. The derivation of these costs and user fees are further explained in the subsections for each of the alternatives in the summary report. It is also noted that these capital costs include only Lower Makefield Township’s share of costs associated with the implementable alternative. The user fees do not include the costs of Lower Makefield Township to operate and maintain its existing collection and conveyance system.

**SUMMARY OF VIABLE ALTERNATIVES**

ALTERNATIVE	CAPITAL COSTS	USER FEES
Conveyance to LBCJMA*	\$38,250,417	
LBJMA Capital Contribution**	\$12,705,000	
LBCJMA Total Cost	\$50,955,417	\$763 per EDU / year
New MMA WWTP US Steel Site	\$48,639,673	\$547 per EDU / year
Lower Makefield Township WWTP	\$54,323,791	\$697 per EDU / year

\* The conservative cost estimate for the capital improvements was utilized so that Lower Makefield Township can adequately plan for the funding requirements of this alternative.

\*\* The executive director of the LBCJMA has stated that the full capital contribution of \$15,000,000 is required to be paid. The use of lesser amounts in the report was for informational purposes only.

Overall, all of the options have a total capital cost of approximately \$50,000,000.00 or more when all costs are considered.

**Come home to a winning team.  
Whether buying, selling or refinancing.**

THE  
**DAVE MARCOLLA**  
GROUP

KELLERWILLIAMS

**America**  
*One mortgage*  
*Delivering the American Dream!*



**Dave Marcolla**

MBA / C-RETS / ABR / SRS / SRES  
NJ & PA Licensed Realtor  
12 Terry Drive, Newtown, PA 18940

[www.davemarcolla.com](http://www.davemarcolla.com) / [dave@davemarcolla.com](mailto:dave@davemarcolla.com)  
609-423-9147 - direct / 215-860-4200 - office



**Christa Kusler**

NMLS 139862  
America One Mortgage  
18 S State St  
Newtown, PA 18940  
215-807-9300  
[Thekuslerteam@gmail.com](mailto:Thekuslerteam@gmail.com)

**TOP 4 ON THE BUCKS  
HAPPENING LIST 2  
YEARS IN A ROW!**



**THANK YOU TO THE BUSINESSES!**



This publication is made available through the generous advertising sponsorship of the businesses listed throughout our newsletter. We wish to encourage your patronage of these establishments; they play a substantial role in the economic vitality of our community.



922 Fayette Street  
Conshohocken, PA 19428

O: (610) 940-1050  
F: (610) 940-1161

[rve.com](http://rve.com)

**Tucker**   
**Chiropractic**  
*& Wellness Center*

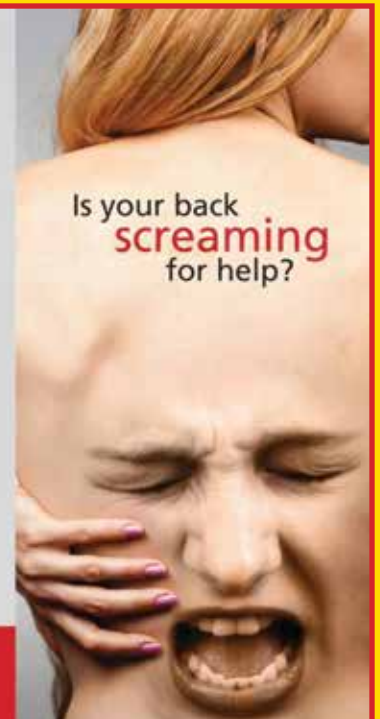
- Sports Injuries
- Disc Herniation Distraction
- Massage
- X-Ray/Spinal EMGs
- Therapy
- Weight Loss/Nutritional Supplements
- Auto/Work Injuries
- Custom Back Braces

**FREE  
CONSULTATION**

Includes individual health history and discussion with a doctor about recommended tests or treatments if necessary. Also in networks with most insurances.

Start living without pain!  
Relieve muscle spasms.  
Relieve symptoms and fatigue.  
Improve function and strength.  
Improve your quality of life.

Is your back  
**screaming**  
for help?



Tucker Chiropractic & Wellness Center

Penn Square, 402 Middletown Blvd., Stes. 210 - 208, Langhorne, PA  
(Behind the Oxford Valley Mall Movie Theater)  
215-750-8006 | [www.DrDavidTucker.com](http://www.DrDavidTucker.com)



**Lower Makefield Township**  
1100 Edgewood Road  
Yardley, PA 19067

Presort Standard  
U.S. Postage  
PAID  
Permit No. 550  
Lehigh Valley, PA



**hometownpress**

This Community Newsletter is produced for  
**LOWER MAKEFIELD TOWNSHIP** by Hometown Press  
(215) 257-1500 • All rights reserved®

To Place An Ad Call Phil Calabro • 267-334-8588 • [advertise4yourbiz@gmail.com](mailto:advertise4yourbiz@gmail.com)



**N A M A S T E**  
NAIL SANCTUARY

The first-of-its kind  
meditation and  
relaxation-focused  
nail services sanctuary.

46 West Rd., Newtown, PA 18940 | (215) 774-9929



**Federated Lending**  
Corporation

1669 Edgewood Road  
Yardley, PA 19067



**Helping You Achieve Your American Dream**  
No broker fees, No hassles, low rates



Loan officers are available  
Monday through Friday from 9am to 8pm.

**Call us: 215-493-1500**

