



FALL 2022



# LOWER MAKEFIELD TOWNSHIP



### LOOK INSIDE

Township Directory .....	3	Public Works .....	16
Letter from the Chair .....	4	Playground Safety .....	17
Fire Services .....	5	Makefield Highlands .....	19
Community Development .....	6	Township Owned Recreational Facilities .....	20-21
Parks and Recreation .....	7-15	Recreational Opportunities .....	21-22

TOWNSHIP OFFICE: 1100 Edgewood Rd, Yardley, PA 19067

Phone: 267.274.1100 | Visit us at [www.lmt.org](http://www.lmt.org)

waterproof noiseproof oops-proof

6"x48 planks with a lifetime stress-free warranty, designed to coordinate with today's décor and to stand up to all of life's messes.



**HOLLAND**  
FLOOR COVERING

RESIDENTIAL • COMMERCIAL

Carpet - Hardwood - Laminate

Vinyl - Stair Runners - Tile

Stone - Backsplashes

Bathrooms - Area Rugs

MANNINGTON  
Begin to imagine

35 SWAMP ROAD  
NEWTOWN, PA

215-357-0909

www.HOLLANDFLOOR.com

ADURA MAX

BRING THIS AD FOR:  
**\$100 OFF**  
Any purchase of \$1,500 or more.  
Retail only. Coupon must be presented  
at time of purchase. Cannot be combined  
with any other discounts. Exp 12/31/22.



VISIT OUR  
NEW SHOWROOM!  
124 E. LANCASTER AVE.  
WAYNE PA  
610-947-6500

**STORM DOCTOR** ROOFING & SIDING  
Exterior Restoration

PA080483



215-357-2700



REMINGTON  
& VERNICK  
ENGINEERS

— Building Better Communities Since 1901 —

Lower Makefield Corporate Center, North Campus  
1010 Stony Hill Road, Suite 175  
Yardley, PA 19067

267-394-4500  
rve.com



**Federated Lending**  
Corporation

1669 Edgewood Road  
Yardley, PA 19067



**HOME FINANCE EXPERTS**

Locally Owned - Sale or Purchase

\*\*\* Now Licensed in Florida \*\*\*



Call us: 215-493-1500

Internet Rates – Apply Online for Free  
www.fedlend.com



Licensed by the PA, NJ & FLA Department of Banking and Securities - NMLS # 112272



# TOWNSHIP DIRECTORY

1100 Edgewood Road, Yardley, PA 19067  
Phone: 267-274-1100 • Website: [www.lmt.org](http://www.lmt.org)

## BOARD OF SUPERVISORS

**James McCartney**, Chair  
267-274-1147 • Email: [jmccartney@lmt.org](mailto:jmccartney@lmt.org)

**Fredric K. Weiss**, Vice Chair  
267-274-1146 • Email: [fweiss@lmt.org](mailto:fweiss@lmt.org)

**Daniel R. Grenier**, Secretary  
267-274-1191 • Email: [dgrenier@lmt.org](mailto:dgrenier@lmt.org)

**Suzanne S. Blundi**, Treasurer  
267-274-1145 • Email: [sblundi@lmt.org](mailto:sblundi@lmt.org)

**John B. Lewis**  
267-274-1143 • Email: [jlewis@lmt.org](mailto:jlewis@lmt.org)

## TOWNSHIP DEPARTMENTS

Lower Makefield Township is dedicated to the well-being of our residents. To focus on the health of the public and our employees, we encourage residents to call or email the Township before coming to our buildings. Your questions can be answered on the phone and much of our permitting and registration can be done electronically.

### POLICE

- Questions and concerns, of a non-emergency nature, can be addressed by calling (215) 493-4055 between 8:30 A.M. – 4:30 P.M. We can also give insights on email and other digital means of obtaining information as opposed to coming into the offices.
- For all non-emergency issues, that require a police officer, please call non-emergency dispatch at (215) 493-4011.
- For all emergencies please dial 911.

### PARKS AND RECREATION

- Permits, Pavilion Rentals, and Class Registration questions can be addressed by calling 267-274-1110.
- Registrations can be completed at <https://register.communitypass.net/LowerMakefield>.
- Dog Park questions can be addressed by calling 267-274-1105 or by emailing [dogpark@lmt.org](mailto:dogpark@lmt.org).
- Pool related questions can be addressed by calling 267-274-1105 or by emailing [communitypool@lmt.org](mailto:communitypool@lmt.org).
- All other park and recreation questions can be addressed by calling 267-274-1110.

### PUBLIC WORKS

- If you have a concern or question, please call the main Public Works number at 267-274-1130 or by emailing [susanr@lmt.org](mailto:susanr@lmt.org) with cc to [grehg@lmt.org](mailto:grehg@lmt.org).
- If you are looking to apply for a road opening permit, please call 267-274-1130 and we will coordinate over the phone and send you the permit via email.

### CODES AND ZONING

- Questions regarding anything related to Building Permits can be made via phone call to 267-274-1126.
- Building Permit applications can be submitted online as a PDF to [permits@lmt.org](mailto:permits@lmt.org), or through our “after hours drop box” conveniently located to the right of the main entrance doors of the Municipal Building.
- Questions regarding Zoning and Planning issues can be made via phone call to 267-274-1123 or via email at [jimm@lmt.org](mailto:jimm@lmt.org).
- Questions and submissions regarding Sewer Lateral Inspections can be made via email to [sewerlateral@lmt.org](mailto:sewerlateral@lmt.org). Submission of paper forms, USB drives and/or the \$100 permit fee checks can be made through our “after hours drop box” conveniently located to the right of the main entrance doors of the Municipal Building.

PA018147

**JMTawnings**  
215-659-5239  
[www.jmtawnings.com](http://www.jmtawnings.com)

*The Quality, Reliability & Experience You Expect*

**perfecta**  
Retractable Fabric Awnings  
Manufactured Locally

SKIN CANCER PREVENTION

**NEWTOWN FIREPLACE SHOP**

*Home is where the hearth is...*

**Everything Fireplace, Specializing In:**  
Gas Inserts • Gas Logs • Wood Stoves  
Fireplace Doors • Mantels & Surrounds  
Fireplace Accessories

**215.968.3981**

[www.newtownfireplaceshop.com](http://www.newtownfireplaceshop.com) 434 Penn St. Newtown, PA 18940

## LETTER FROM THE CHAIR

On behalf of the Board of Supervisors, welcome to Fall 2022. We hope everyone enjoyed their summer vacations (and stay-cations). The pool has continued to be a center piece for the community and we are committed to providing the best community pool in all of Bucks County! Meanwhile, Makefield Highlands continues to be one of the best public courses in the county and provides great family fun with the Top Tracer range feature. Using proceeds from the recent sewer sale, The Board of Supervisors are in the process of creating an irrevocable trust that will help tax payers for years to come. Remaining sewer proceeds and any available grant opportunities will be used to repair existing infrastructure, renew real estate assets and recreational facilities in order for the Township to maintain a high quality of life for ALL residents.

Sadly, the Board of Supervisors had to say goodbye to two pivotal team members in 2022. Kurt Ferguson (Township Manager) and Greg Hucklebridge (Director of Public Works) both accepted positions outside of the Township. The Board began the replacement process for both positions and we look forward to interviewing the prospective candidates. I want to thank my fellow Supervisors Weiss, Blundi, Grenier and Lewis for their continued dedication to Lower Makefield. This group of Supervisors continues to dedicate time and expertise to ensure Lower Makefield Township maintains is high desirability as a place to live. I would especially like to thank Chief Ken Coluzzi who has stepped up during the Township Manager vacancy to offer support to the various department heads/staff as well as continued insight and expertise to the Board of Supervisors.

The strength of our community remains our residents. As we move closer to the end of the year, we look forward to seeing them take advantage of everything Lower Makefield Township has to offer!

**James McCartney**  
**Chair**  
**Lower Makefield Township Board of Supervisors**  
**1100 Edgewood Road, Yardley Pa 19067**  
**(267) 274-1147**  
**[www.lmt.org](http://www.lmt.org)**

*Beauty and Security that Last a Lifetime!*



**102 years of Quality Family Business**

**Sales, Service, & Installation**

**VISIT OUR SHOWROOMS**

<b>Lawrenceville, NJ</b> 2850 Brunswick Pike (Business Rt. 1) Lawrenceville, NJ 08648 <b>609-883-0900</b> NJ HIC# - 13VH02000800	<b>Yardley, PA</b> 10 N Main Street (At The Gristmill) Yardley, PA 19067 <b>215-493-7709</b> PA HIC# - 022787
---	--

**[www.jammerdoors.com](http://www.jammerdoors.com)**

**Garage Doors • Operators • Gate Openers • Entry Doors • Patio Doors • Storm Doors • Windows**

## FIRE SERVICES



The Yardley-Makefield Fire Company answered 570 calls for service in 2021, culminating over 7,000-man hours between answering emergency calls, training, and special details. All of our members are volunteers who

are your neighbors, friends, and relatives. The company strives to provide top notch service to the community by ensuring members are nationally trained and ready to handle any type of emergency. Volunteerism is struggling as fuel prices are over \$5.00 a gallon, house prices are constantly rising, and families are constantly busy with kids' sports schedules. The company is always looking for new members, from interior firefighters to fire police who assist in directing traffic at emergency scenes and even members who help administratively with bookkeeping and paperwork. The fire company would like to provide some summer fire safety tips to everyone:

### Make sure your gas grill is working properly

- Leaks or breaks are primarily a problem with gas grills. Check the gas tank hose for leaks before using it for the first time each year.
- If your grill has a gas leak detected by smell or the soapy bubble test, and there is no flame, turn off both the gas tank and the grill. If the leak stops, get the grill serviced by a professional before using it again. If the leak does not stop, call the fire department.
- If you smell gas while cooking, immediately get away from the grill and do not move it. If the flame goes out, turn the grill and gas off and wait at least 5 minutes before re-lighting it.

### Never leave equipment unattended

- Make sure to closely monitor food cooking on the grill. Turn the grill off promptly, when you're done cooking, and let it

cool completely before returning it to its original location.

- For campfires, fire pits, and chimineas, always have a hose, bucket of water, or shovel and dirt or sand nearby, and make sure the fire is completely out before going to sleep or leaving the area.

### Keep equipment a safe distance from things that can burn

- Place your grill well away (at least 3 feet) from anything that can burn, including deck railings and overhanging branches; also keep them out from under eaves.
- Keep portable grills a safe distance from lawn games, play areas and foot traffic.
- Keep children and pets well away from any type of equipment in use.
- In areas where campfires are permitted, they must be at least 25 feet away from any structure and anything that can burn. Also, make sure to clear away dry leaves and sticks, overhanging low branches and shrubs.

### Use fuel and fire starters properly

- If you use a starter fluid to ignite charcoals, use only charcoal starter fluid. Never add charcoal fluid or any other flammable liquids to the fire.
- Keep charcoal fluid out of the reach of children and away from heat sources.
- Never use gasoline or other flammable or combustible liquids on firepits, chimineas, or campfires.
- For electric charcoal starters, which do not use fire, make sure the extension cord you are using is designed for outdoor use.

### If a fire breaks out, call the fire company

- For any type of outdoor fire that can't be quickly and effectively extinguished, call the fire company immediately for assistance.

For more information go to the National Fire Protection Association (NFPA) website at [www.nfpa.org](http://www.nfpa.org).



**LIEBMANN**  
Family Law

4 Terry Drive, Suite 4 • Newtown, PA 18940

Ph: 215-860-8200

[www.liebmannfamilylaw.com](http://www.liebmannfamilylaw.com)



Jeffrey A. Liebmann, Mindy J. Snyder, David J. Sowerbutts

DIVORCE  
PRENUPTIAL  
AGREEMENTS  
CUSTODY & SUPPORT  
LGBTQ LAW  
ESTATES & PROBATE  
ADOPTION

DOMESTIC  
VIOLENCE  
ELDER LAW  
PATERNITY  
GRANDPARENTS'  
RIGHTS  
WILLS

Free initial consultation. Weekend and Evening Appointments Available.

# COMMUNITY DEVELOPMENT

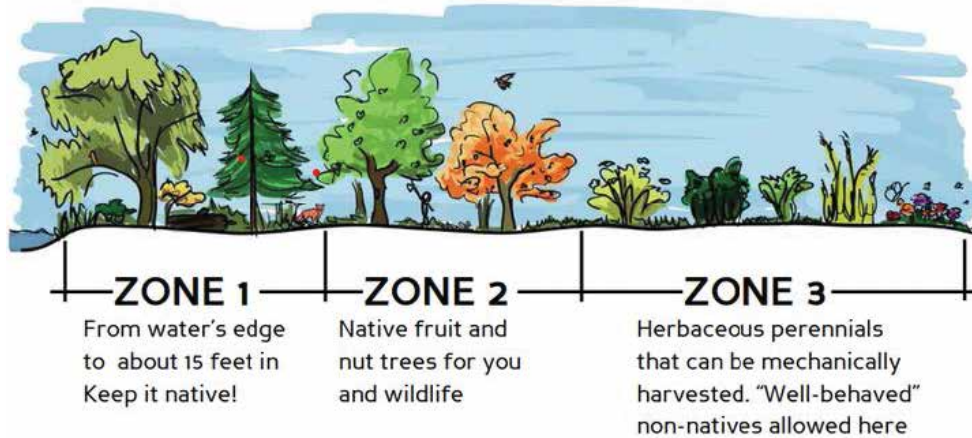
The Community Development Department is upgrading its software this Fall to provide a more streamlined process for permitting and citizen engagement to better serve our residents. The OpenGov Citizens Services online portal will allow us to electronically receive resident concerns and permit applications, follow-up with residents and contractors, track progress through automated notifications for desired due dates and deadlines, collect electronic payments, conduct inspections, and issue permits. The Planning Commission webpage has Subdivision and Land Development information including Meeting Agendas, Current Plans Under Review, SALDO Status Updates, Reports, and Meeting Minutes at: <https://www.lmt.org/government/boards-and-commissions/planning-commission/>

The Zoning Hearing Board webpage has information on Land Use appeals including Zoning Hearing Board Procedures, Meeting Agendas, Plans under consideration and Meeting Minutes at: <https://www.lmt.org/government/boards-and-commissions/zoning-hearing-board/>. Links to other Township Boards and

Commissions, including meeting agendas, meeting minutes and more can be found at: <https://www.lmt.org/government/boards-and-commissions/>. If a waterway runs through your land & you're not familiar with stream buffers, they're a natural solution for cleaner water & healthier land.

- Reduced erosion
- Cleaner water
- Favorable natural conditions for wildlife
- Enriched landscape
- Protect natural floodplain functions using suggested plantings: <http://ow.ly/L5Yz50Fd5ob>

Contact our department at 267-274-1120 for assistance, if you are planning any work in the floodplain or near a stream. For more info visit: <https://www.lmt.org/public-safety/delaware-river-flood-info-and-insurance/>



**YARDLEY JEWELERS**  
 GOLDSMITH • SILVERSMITH • PLATINUMSMITH  
 GEMOLOGIST • APPRAISER  
 2 South Main St  
 Yardley, PA 19067  
 215-490-1300

Our Facets of Fire Diamond      Traditional Diamond

Only at Yardley Jewelers

[www.yardleyjewelers.com](http://www.yardleyjewelers.com)

Family Owned & Operated Since 1948

**COOL-AID co.**

**AIR CONDITIONING & HEATING**

Residential & Commercial Heating & Air Conditioning Services  
 Quality Repairs & Installation

**A/C CHECK-UP \$39<sup>95</sup>**

**FREE ESTIMATES ON INSTALLATIONS**

**215-698-1600**

**www.CoolAidCo.com**

Fully Licensed & Insured • Lic# PA042039

**Serving Philadelphia, Bucks & Montgomery Counties**



# PARKS AND RECREATION

**The Play for all Vision** The Lower Makefield Township Board of Supervisors recently adopted the Play for All vision as part of the larger Play for all Plan. This plan embraces the idea of something for everybody within our parks system.

[Play For All Planning | Lower Makefield Township \(lmt.org\)](http://lmt.org)

## Why Play for All?

Many people play cards, play with a ball, play an instrument or act in a theatrical play and so on...we could play on words all day but you get the idea...

Play is not just for kids, it is something that follows you into adulthood and allows many an opportunity to relieve stress, promote good health and to be one with nature. If you look for a definition of play, you will find many variations of the word-which is why "Play for All" works. Simply, play is something you do for leisure or recreation that is not serious.

Play promotes good health both physically and mentally. It allows for opportunity for human interaction and hands on education.

The Lower Makefield Township Parks and Recreation Department is located at the Community Center and is open to the public, Monday-Friday from 9am-3pm field for pavilion rental requests, and to sign up for programs like the ones you will find within this guide.

You can also register ONLINE! For The Pool, the Dog Park, field and pavilion permit requests, as well as classes and programs. These opportunities can be found at: [REGISTER.COMMUNITYPASS.NET/LOWERMAKEFIELD](http://REGISTER.COMMUNITYPASS.NET/LOWERMAKEFIELD)

(If you already have an account for The Pool, Dog Park, or from a previous class, please sign in using the same account!) For questions or feedback, please call 267-274-1110 or email [prinfo@lmt.org](mailto:prinfo@lmt.org).

**2022 NEW VISION:** Play for All

**MISSION:** The Parks and Recreation Department is committed to providing top-notch parks and recreation facilities and services for all residents through three key themes:

**HEALTH:** Improve physical health, mental health and overall quality of life by offering safe and accessible facilities and open space.

**ENVIRONMENT:** Act as environmental stewards through responsible use of the natural environment and protect and maintain Parks and Recreation assets.

**COMMUNITY:** Create opportunities for the community to connect through a wide variety of partnerships, programs, events and classes.

LMT SCORE CARD
<b>Population 33,180</b>
<b>Area: 18.3 square miles</b>
<b>Number of Parks and Green Spaces 21</b>
<b>Parkland 820 acres</b>
<b>Trails 25 miles</b>
<b>Annual investment per capita: \$62</b>
<b>Ratio of Township Budget: 12%</b>
<b>Cost recovery: 75%</b>
<b>Grants since 2017: \$1,260, 519</b>

**Beer & Wine**  
Now At Your  
**ShopRite of Yardley**  
**The Perfect Pour Awaits...**

ShopRite of Yardley now has all your beer and wine needs.  
Shop over 200 domestic, imported, and craft beers.  
Curated selection of wines not readily available in Bucks County including small production organic and natural wine with no additions.

 ShopRite of Yardley  
1603 Big Oak Rd, Yardley, PA 19067  
(215) 595-0078

# PARKS AND RECREATION

## INFORMATION

### LMT YOUTH COMMITTEE

Lower Makefield Township is happy to announce that we have brought back our Youth Committee. After a long year off due to COVID-19, we have successfully made a comeback. The LMT Youth Committee is made up of 9th to 12th graders who are looking to get involved in the Lower Makefield Township Community. The Youth Committee volunteers in numerous service opportunities throughout the year to help make the Township a better place for all. For more information, please visit LMT Youth Committee | Lower Makefield Township or email [elawson@lmt.org](mailto:elawson@lmt.org).

Mission Statement: Organize leadership, community service, and recreational opportunities for and by the youth in our community and make recommendations to the Parks and Recreation Board.

### LMT DOG PARK



- **Registration information:** [REGISTER.COMMUNITYPASS.NET/LOWERMAKEFIELD](https://REGISTER.COMMUNITYPASS.NET/LOWERMAKEFIELD)
- **Residents:** \$35 / for one (1) dog; \$15 for each additional dog, per year
- **Non-Residents:** \$50 / for one (1) dog; \$15 for each additional dog, per year

Register online for a free upcoming dog park orientation class. After the class is complete, residents can register and pay online, and bring shot records, PA dog license receipts, and the certificate from completing the class to the LMT Community Center (1550 Oxford Valley Road) or email to [dogpark@lmt.org](mailto:dogpark@lmt.org)

Orientation is held at the Community Center 1550 Oxford Valley Rd. Oxford Valley Rd. Yardley PA 19067 (located next to the Fred Allan Softball Fields).

#### 2022 Dog Park Orientation Schedule

September 14, 7:00PM	October 12, 7:00PM	November 9, 7:00PM	December 14, 7:00PM
----------------------	--------------------	--------------------	---------------------

#### Park Pavilion Permit Requests

There are two pavilions available for private parties and events. Kid's Kingdom at Community Park has a covered pavilion with capacity for ~30 people. Memorial Park has a covered pavilion next to the Secret Garden Playground with capacity for ~20 people. Both pavilions have bathroom, playground, grilling, and picnic table access.

Rentals are \$15/hour plus a refundable \$50 security deposit check to hold the reservation. Reservations can be made online using your Community Pass account.

#### Park Bench Donation Program

Please note: Benches may take an extended time for delivery due to supply chain issues. This program is designed to update and improve the benches in our parks, fields, etc., while allowing community members to dedicate something lasting in memory of a loved one, or a community group to sponsor and support the Township.

Please visit [LMT.org/government/departments/parks-recreation](https://www.lmt.org/government/departments/parks-recreation) to purchase or for more information.





LIVE ENTERTAINMENT | FIREWORKS AT DUSK | RIDES FOR ALL AGES  
FOOD VENDORS | AND MORE!!!

# SAVE THE DATE!

## LOWER MAKEFIELD TOWNSHIP COMMUNITY DAY

FOR MORE INFORMATION: WWW.LMT.ORG OR CALL 267.274.1105

**saturday AUGUST 27, 2022**

LMT COMMUNITY PARK, 1050 EDGEWOOD ROAD, YARDLEY PA

LOWER MAKEFIELD TOWNSHIP  
Parks & Recreation

# HONORING ALL WHO SERVED

16th Annual  
*Veterans Day*  
**Parade & Ceremony**  
NOVEMBER 5TH

FOR MORE INFORMATION:  
WWW.LMT.ORG OR CALL 267.274.1105

LOWER MAKEFIELD TOWNSHIP  
Parks & Recreation

Since 1978, Hill Wallack has grown from a local firm into a regional leader. Our commitment to excellence drives us forward, but our strong relationships within our community keep us grounded.

As a mid-market law firm with offices in Pennsylvania, New Jersey and New York, we provide sophisticated, high-level service to clients in a cost-effective, responsive manner.

We are substantial in scope, but personal in service.

- Family & Matrimonial Law
- Banking & Financial Services
- Business & Commercial
- Creditors' Rights/Bankruptcy
- Employment & Labor Law
- Municipal Law
- School Law
- Real Estate & Land Use
- Trial & Insurance Defense
- Trusts & Estates

**Hill Wallack** LLP  
Attorneys at Law

hillwallack.com  
215.579.7700

777 Township Line Road | Yardley, Pa.

# TIFFANY'S ANIMAL CARE

*... for those times when you can't be there!*

## DOMESTIC & FARM ANIMAL CARE / SITTING

Reliable • Friendly • References  
Drop-in Visits & Dog Walker • House Sitting

**Call 215.920.0204**

## 2022-23 LOWER MAKEFIELD TOWNSHIP EVENT SPONSORSHIP OPPORTUNITIES

Lower Makefield Township Parks and Recreation offers many different annual events for the Community that provide potential businesses the opportunity to connect with our community. Our Township events attract thousands of individuals and families each year at no or minimal cost to the residents. Your sponsorship makes this possible. The sponsorship package levels enable businesses of every type to identify sponsorships that align with their values and mission.

For information about sponsoring events please contact [kathyh@lmt.org](mailto:kathyh@lmt.org) or 267-274-1105. Depending on the level of your support, there are opportunities to be publicized on our website, act as a cohost on social media, have signage up on event day and be mentioned on our media releases. We will work with you to develop the best package that fits your needs.

### LMT Race Series

Lower Makefield Township is excited to announce our 2022 LMT Race series dates. Lower Makefield hosts a series of races throughout the year for a variety of different foundations. Each run was a huge success last year and it is our hope that it grows even more this year. There are plenty of opportunities to get involved in our race series from being a participant, sponsor, and volunteer. To register, go on [LMT.ORG](http://LMT.ORG) and check out the special events page under Parks and Recreation. For more information regarding one of the races please call (267) 274-1111 or email [elawson@lmt.org](mailto:elawson@lmt.org).



BWags Photography

#### 5K Any Way Color Fun for Accessibility

August 6, 2022 at Macclesfield Park was a huge success!

#### 9/11 Garden of Reflection 5K

September 18, 2022 at the Garden of Reflection Race the Course

#### 5K/10k

November 4, 2022 at Makefield Highlands Golf Club



### THANK YOU TO THE BUSINESSES!

This publication is made available through the generous advertising sponsorship of the businesses listed throughout our newsletter. We wish to encourage your patronage of these establishments; they play a substantial role in the economic vitality of our community.

The logo for Big Oak Citgo, featuring a white silhouette of a tree inside an oval, with the text "Big Oak Citgo" and "Since 1994" below it.

**Full Service Auto Repair**  
**All Makes & Models**  
**Online Appointment Booking**

**215.295.4535**  
**[www.BigOakCitgo.com](http://www.BigOakCitgo.com)**

Located at the corner of Big Oak & Makefield Roads

SAVE THE DATE

7  
OCTOBER

**HALLOWEEN**  
**COSTUME PARTY**

FOR MORE INFORMATION:  
[WWW.LMT.ORG](http://WWW.LMT.ORG) OR CALL 267.274.1105

LOWER MAKEFIELD TOWNSHIP

Parks & Recreation



# 2022 Program Schedule

## ADULT FITNESS & WELLNESS

Register: <https://register.communitypass.net/LowerMakefield>

### MONDAY

#### ZUMBA GOLD WITH RACHEL

8-Week Series | 8:30 AM

September 12 – November 7

Resident: \$60.00 Per 8-week session

Non-Resident: \$69.00 Per 8-week session

Zumba Gold is perfect for anyone who is looking for a modified Zumba class that recreates the original moves you love at a lower intensity. While it is targeted for the older active adult, anyone can join in the fun! The design of the class introduces easy to follow Zumba choreography that focuses on balance, range of motion and coordination. Come ready to sweat and prepare to leave empowered and feeling strong. Benefits - Class focuses on all elements of fitness: cardiovascular, muscular conditioning, flexibility and balance. Have a water bottle close by.

#### CHAIR YOGA WITH MARIA (every Monday and Thursday)

10:00 AM

Punch Cards will be sold at the Community Center

\$40.00 for 8 classes | \$10 Drop in Class

Chair Yoga is an excellent practice for those who are looking for an alternative to traditional mat yoga. The benefits are improved flexibility, balance, strength, & circulation. We will begin with connecting to our breath by practicing pranayama (breath work), which will activate the para sympathetic nervous system, (rest & digest mode) releasing stress, promoting healing & recovery.

The physical practice will include; seated & balance poses w/ the support of a chair. We will work to stretch, strengthen, and increase circulation & mobility throughout the entire body.

#### SUNSET YOGA WITH JEANINE

6-Week Series | 6:30 PM

August 29 – October 10

Resident: \$54.00 Per 6-week session

Non-Resident: \$62.00 Per 6-week session

Enjoy the warmth of the sun and gentle breezes during a 6-week series of outdoor yoga flow class. All experience levels are welcome. The classes will consist of basic foundational poses with a focus on good alignment, connecting movement to breath and will of course end with a relaxing meditation in Savasana.

Through the practice of yoga, the body can be strengthened, mobility increased and balance improved. Be surrounded by the sights and smells of the fall awakening around you in the beautiful Memorial Park in Yardley, PA. Classes will be held in the Oak Garden on Monday evenings from 6:30 pm to 7:30 pm. Participants should bring a yoga mat or blanket/beach towel on which to practice along with any props they would like. Don't forget water, bug spray or any other comfort items.



### TUESDAY

#### GENTLE YOGA EVENING CLASS WITH LINDA

4-Week Series | 6:30 PM

September 13 – October 4 | October 11 – November 1

Resident: \$36.00 Per 4-week session

Non-Resident: \$42.00 Per 4-week session

Gentle yoga is great for beginners and students wanting to develop and maintain flexibility and strength. Poses (asanas) and breathing techniques (pranayama) are executed at a slow and mindful pace to support each individual's comfort level.

### WEDNESDAY

#### GENTLE YOGA WITH LINDA

4-Week Series | 9:30 AM

September 14 – October 5 | October 12 – November 2

Resident: \$36.00 Per 4-week session

Non-Resident: \$42.00 Per 4-week session

Gentle yoga is great for beginners and students wanting to develop and maintain flexibility and strength. Poses (asanas) and breathing techniques (pranayama) are executed at a slow and mindful pace to support each individual's comfort level.

# 2022 Program Schedule

## ADULT FITNESS & WELLNESS

Register: <https://register.communitypass.net/LowerMakefield>

### WEDNESDAY

#### SUNSET YOGA WITH JEANINE

6-Week Series | 6:30 PM

August 31- October 5

Resident: \$54.00 Per 6-week session

Non-Resident: \$62.00 Per 6-week session

Enjoy the warmth of the sun and gentle breezes during a 6-week series of outdoor yoga flow class. All experience levels are welcome. The classes will consist of basic foundational poses with a focus on good alignment, connecting movement to breath and will of course end with a relaxing meditation in Savasana. Through the practice of yoga, the body can be strengthened, mobility increased and balance improved. Be surrounded by the sights and smells of the fall awakening around you in the beautiful Memorial Park in Yardley, PA. Classes will be held in the Oak Garden on Monday evenings from 6:30 pm to 7:30 pm. Participants should bring a yoga mat or blanket/beach towel on which to practice along with any props they would like. Don't forget water, bug spray or any other comfort items.

### THURSDAY

#### MAT PILATES WITH CHRISTINE

5-Week Series | 10:00 AM

September 22 – October 20

Resident: \$88.00 Per 5-week session

Non-Resident: \$100.00 Per 5-week session

Joseph Pilates described physical fitness as the first prerequisite of happiness. Our bodies are meant to move, and Pilates is where core strengthening, postural alignment, the breath, and focused movement come together to awaken the body, ease tension, and recruit muscles that help you move with more grace and flow.

In addition to classical mat Pilates exercises, this class includes standing balance and body resistance exercises for participants at every level.

### THURSDAY

#### STRENGTH TRAINING WITH SANDY

8-Week Series | 6:30 PM

September 15 – November 3

Resident: \$90.00 Per 8-week session

Non-Resident: \$104.00 Per 8-week session

This is non-cardio workout using light hand weights to work all of our major muscle groups. You will gain strength, coordination and burn calories. Let's feel better, stronger and have fun together! Bring hand weights, mat, towel and water bottle.

### THURSDAY

#### ZUMBA DANCE PARTY WITH SANDY

8-Week Series | 7:30 PM

September 15 – November 3

Resident: \$90.00 Per 8-week session

Non-Resident: \$104.00 Per 8-week session

Ditch the workout and let the party begin!!! Whether you are a first-timer or experienced "Zumba" follower, this class is for everyone! This is easy to follow, fun, crazy, cardio combined with aerobic moves. Get ready to move and groove! Bring your towel and water bottle.

### FRIDAY

#### ZUMBA GOLD WITH RACHEL

8-Week Series | 9:00 AM

September 2 – October 21

Resident: \$60.00 Per 8-week session

Non-Resident: \$69 Per 8-week session

Zumba Gold is perfect for anyone who is looking for a modified Zumba class that recreates the original moves you love at a lower intensity. While it is targeted for the older active adult, anyone can join in the fun! The design of the class introduces easy to follow Zumba choreography that focuses on balance, range of motion and coordination. Come ready to sweat and prepare to leave empowered and feeling strong. Benefits - Class focuses on all elements of fitness: cardiovascular, muscular conditioning, flexibility and balance. Have a water bottle close by.

# 2022 Program Schedule

## YOUTH FITNESS & WELLNESS

Register: <https://register.communitypass.net/LowerMakefield>

THURSDAY

### SOCKEY HOCKEY (GRADE 1-4)

6-Week Series | 5:45 PM

September 29 – November 3

Resident: \$163.00 Per 6-week session

Non-Resident: \$188.00 Per 6-week session

Sockey is a safe variant of floor hockey played with neoprene sock-covered hockey sticks, soft indoor hockey balls, and players wear sneakers instead of skates. The indoor co-ed sport is created to learn the game of hockey, exercise, and have fun! Players receive a team shirt and hockey sticks are provided.

## FAMILY FITNESS & WELLNESS

Register: <https://register.communitypass.net/LowerMakefield>

THURSDAY

### BABY GOAT YOGA SAVE THE DATES!

September 4 | October 1 | 9:00 AM

Veterans Square

Resident: \$40.00

Nonresident : \$46.00

The goat in me honors the goat in you! Join us outdoors for Baby Goat Yoga class! Goat yoga offers the many therapeutic benefits of animal and laughter therapy in a feel good, fun, yoga class... with adorable baby miniature goats. Goat yoga allows guests to step outside of their everyday routine and remind them to not take life so seriously. See how the goats can help you connect with nature and how a soft touch from a goat or two is just the extra push you need in your practice. This class is designed for beginners but all levels are welcome to attend. Anyone in the Goat Yoga class room is considered a participant.

Children 12 and under must be accompanied by a parent, who must register for the program as well.



**Bucks County Runs On Us!**

**KENDERDINE'S**  
Heating Oil Delivery  
Equipment Sales & Service

215-968-2041  
[www.kenderdines.com](http://www.kenderdines.com)  
500 S State Street • Newtown PA

- HVAC Installations
- A/C & Heat Pump Systems
- Boilers & Furnaces, Oil & Gas
- Service Contracts for A/C, Heat Pumps, Furnaces, Boilers

**Amana**  
Amana is an American brand of HVAC equipment.

*Hometown Press, the publisher of your Hometown Newsletter*

**We would like to send out a Heartfelt, Safe and Healthy message to all the residents, businesses, and Township staff during this pivotal time in history.**

*"And the World Came Together as the People Stayed Apart"*

**BUCKS COUNTY ELDER LAW**  
**Henry A. Carpenter II**  
Certified Elder Law Attorney

**AREAS OF PRACTICE**

- Life Care Planning
- Asset Protection Planning
- Special Needs Planning/Trusts
- Medicaid Planning
- Guardianship
- Estate Administration
- Estate Planning
  - Last Will & Testament
  - Powers of Attorney
  - Living Will/Advance Health Care Directive

Licensed in Pennsylvania and New Jersey

**CALL OUR OFFICE TO SCHEDULE YOUR COMPLEMENTARY, NO OBLIGATION, INITIAL CONSULTATION.**

**Henry A. Carpenter II, Esq.**  
Certified Elder Law Attorney (CELA)  
Master of Laws in Taxation (LL.M)  
2020 recipient "Excellent in Elder Law" Award  
Chairman Emeritus, Elder Law Section of the Pennsylvania Bar Association

**215-493-0727** [www.buckscountyelderlaw.com](http://www.buckscountyelderlaw.com)  
**301 Oxford Valley Rd Suite 101B, Yardley PA 19067**  
**Email: [henryc@haciilaw.com](mailto:henryc@haciilaw.com)**

ACCREDITED BUSINESS (BBB), NAELA (National Academy of Elder Law Attorneys), National Elder Law Foundation, Bucks County Bar Association, Bucks County Lawyers' Association

# 2022 Program Schedule

## ADULT ART CLASSES

Register: <https://register.communitypass.net/LowerMakefield>

### THURSDAY

#### WATERCOLOR ART CLASS WITH CHRIS

6-Week Series | 10:30 AM

September 1 – October 6

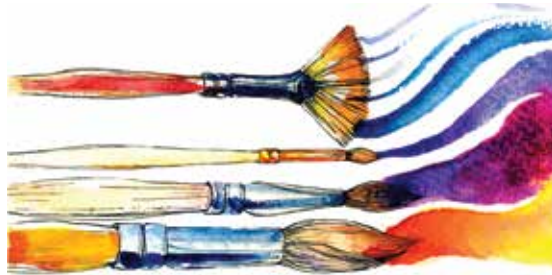
Resident: \$60.00 Per 6-week session

Non-Resident: \$69.00 Per 6-week session

Something for everybody!

Come, relax, enjoy and Draw/Paint with a FUN group of artists!

- You will learn many useful techniques and methods for producing watercolor paintings of your own.
- No previous experience is required. By the end of this course you will be able to finish a watercolor painting with confidence.
- Learn the basics of pictorial composition, people, perspective and many other aspects of ART!
- To analyze painting strategies for executing original artworks and to prepare paintings for exhibition.
- You will be more informed about brush, paint, and paper types and what is best for you.
- Learn to paint trees, skies, people, animals and much more!



### FRIDAY

#### WATERCOLOR ART CLASS WITH CHRIS

6-Week Series | 10:30 AM

September 9 – October 14

Resident: \$60.00 Per 6-week session

Non-Resident: \$69.00 Per 6-week session

**Highly experienced board certified orthodontists**  
**The most advanced and proven treatments**

- ✓ Affordable financing options
- ✓ Most insurance plans accepted
- ✓ Early morning & evening appointments available

Dr. Jordan Cogan      Dr. Cathleen George



**CG Orthodontics**

Richboro 51 Almshouse Road Richboro, PA 18954 215-355-5995

Yardley 1703 Yardley-Langhorne Road teeththatraight.com

**Come Experience**



**Dance Arts of Yardley**

Featuring Mature & Experienced Teachers

Specializing in early dance instruction—  
Make the first experience the best it can be!

All Ages/All Levels:  
Ballet, Pointe, Tap, Jazz,  
Lyrical, Contemporary,  
Preschool Creative Dance,  
Hip-Hop, Adult Dance,  
Competitive Dance Teams

Centrally located in the  
Floral Vale Professional Park  
207 Floral Vale Blvd. in Yardley  
215-968-3377  
[www.danceartsofyardley.com](http://www.danceartsofyardley.com)

All studios equipped with  
floating wood subfloors  
for shock absorption  
and injury prevention!

## PUBLIC WORKS

### Leaf Collection

Leaf Collection normally begins the first week of November. There are two rounds of pick-ups and the second starts after the first is fully complete. Typically, each round takes about 4 weeks, weather dependent, with the final round usually wrapping up by Christmas. In the event we get ahead of schedule, we will make an effort to return to neighborhoods on their scheduled week. Details and status updates will be posted on the Lower Makefield Township website ([www.lmt.org](http://www.lmt.org)) as well as on TV (Comcast cable channel 22 and Verizon FIOS channel 20).

The Township is broken up into zones and teams are assigned into each zone for leaf collection. Each team is made up of a truck with leaf trailer, a driver, a hose operator and 1-2 rakers. Last year we utilized up to 7 Township teams plus 3 contractor teams. We employ approximately 20 additional seasonal employees during the fall to round out our teams. It is a large-scale operation which requires detailed planning to execute efficiently.

Each team systematically works through their assigned zone to pick up the leaves on each side of every street with residential properties. As the Public Works Crew works hard to collect the leaves in a timely manner, we want to add a few notes and reminders so we can all help each other in this endeavor:

- Rake leaves curbside for pick-up – NOT IN THE STREET. In LMT, it is unlawful to place leaves, materials or substances on any road or highway.
- Leaves must be free of branches, twigs, grasses and other debris. These items clog and damage the vacuum hoses on the machines and cost valuable time to repair.
- Leaves in biodegradable bags will be picked up, while leaves in plastic bags will be emptied and the bags left curbside. Plastic bags damage the machines and don't make good compost.
- When it snows, the same equipment and crew used to pick up the leaves is used in snow removal efforts. Even minor overnight snowfall impacts our ability to pickup leaves as the equipment has to be switched back over.

### Snow and Ice Removal

With the onset of the winter season, please keep in mind the following information. If there are more than 2 inches of snow on the ground, or if there's a snow emergency, move cars off the street, and pull trashcans from the curbs to make room for the snowplows. Basketball nets shall also be removed from the edge of roadways as well. Do not shovel snow from the driveway or sidewalk into the street while plows are running. In order to reduce risk of a plow hitting your mailbox, place reflective material prominently on the box.

Clear snow from your front doors if you need to make a quick exit – for instance, in case of a fire. Shovel around your fire hydrants so they're visible and accessible from the street by fire rescue personnel. The house you save could be your own.

Those with special needs or those experiencing personal emergencies, do not hesitate to call 911.

Within 24 hours after snowfall – if feasible, walks should be shoveled for safety of pedestrians. If ice does not permit removal, scatter salt or sand as necessary.

Township salting operations begin on primary highways as soon as snow or freezing rain starts to fall. Plowing begins after 2 to 3 inches accumulates. After primary routes are clear, plows proceed to secondary streets.

- Stick to main thoroughfares whenever possible
- Maintain a safe distance from snow removal equipment.
- Don't use high beams on headlights when driving behind snow equipment since the reflected light can hinder the driver's vision.
- If possible, park cars in driveways during inclement weather to allow curb-to-curb plowing.
- Clear all sidewalks of snow and ice within 24 hours after precipitation ends. Snow may NOT be piled onto fire hydrants or onto streets. The pathway must be at least 24 inches wide and must include access to the street.

PLUMBING • HEATING • COOLING • ELECTRICAL • DRAIN CLEANING

**McHales**  
Since 1950

[mchales.net](http://mchales.net) 215-600-4859

**Neighborhood  
Discount  
\$33 Off  
Any Service Work**

\*\*Restrictions may apply\*\* Not to be used with any other  
McHales coupon or discount



**Tim McHale**  
Owner and Resident



# PLAYGROUND SAFETY

A quick checklist for parents

**P**lace this list in a prominent area of your home for quick reference. Then, before your children head out the door for the playground, check that:

- Supervision is present, but strings and ropes aren't.**  
Adult presence is needed to watch for potential hazards, observe, intercede and facilitate play when necessary. Strings on clothing or ropes used for play can cause accidental strangulation if caught on equipment.
- All children play on age-appropriate equipment.**  
Preschoolers, ages 2-5, and children ages 5-12, are developmentally different and need different equipment located in separate areas to keep the playground safe and fun for all.
- Falls to surface are cushioned.**  
Nearly 70 percent of all playground injuries are related to falls to the surface. Acceptable surfaces include hardwood fiber/mulch, pea gravel, sand and synthetic materials such as poured-in-place, rubber mats or tiles. Playgrounds surfaces should not be concrete, asphalt, grass, blacktop, packed dirt or rocks.
- Equipment is safe.**  
Check to make sure the equipment is anchored safely in the ground, all equipment pieces are in good working order, S-hooks are entirely closed, bolts are not protruding, there are no exposed footings, etc.



Checklist is from the National Program for Playground Safety (NPPS) at [www.uni.edu/playground/](http://www.uni.edu/playground/)

# ManorCare

IS NOW

 **PROMEDICA**  
SKILLED NURSING  
AND REHABILITATION

1480 Oxford Valley Road  
Yardley, PA 19067

**215-321-3921**

[promedicasillednursing.org/OxfordValley](http://promedicasillednursing.org/OxfordValley)

© 2021 ProMedica Health System, Inc., or its affiliates.  
\*Images taken prior to mask requirements.



**TEAM**



**TOYOTA  
LANGHORNE**

## **TEAM SERVICE CARE 2 YEAR PREPAID MAINTENANCE PLAN**

- 2 Oil & Filter Changes
- 5 Tire Rotations
- Top off Fluids
- Multi Point Inspection
- 2 Years of Roadside Assistance

**\$199**

An Average Savings  
of \$135.74

\* Plus tax. Valid on most models.

### **PA STATE EMISSIONS & INSPECTION**

**\$15 OFF**

\* Pass or fail. Sticker fees addtl.

### **REMOTE START SPECIAL**

**\$499**

\* Plus tax. Valid on most models

### **TOYOTA WEEKDAY RENTAL**

**20% OFF**

\* 2 day minimum rental.  
Not valid on weekends.

\*Must present offer when service order is written. One offer per customer. May not be combined with other offers. Not applicable to prior purchases. Other restrictions may apply. Offers expire 09/30/2022.



**WE SERVICE ALL MAKES & MODELS**

407 E Lincoln Hwy  
Langhorne, PA

**215.486.0827**

**TEAMLANGHORNE.COM**

# Makefield Highlands

REDEFINING PUBLIC GOLF

GOLF • DINING • EVENTS • OUTINGS



**Check out our Toptracer Monitor and Food/Party Packages!  
Let us host your next party, outing, or special event!**

*Enjoy Toptracer, always live on your phone with the Toptracer app!*



**TOPTRACER FREE FRIDAYS!**  
FREE 30 Minute Monitor Bookings  
Between 4p-6p on Fridays Only.

**Watch for our Wedge Clinics  
throughout the summer!**

MAKE FRIENDS 1418 WOODSIDE ROAD YARDLEY, PA 215.321.7000

MEET FRIENDS HAPPY HOUR 5pm to 8pm

— FRIDAY MUSIC SERIES —

June 24	July 8	July 22
<b>Bill Thomas</b>	<b>Jerry Lee Watkins</b>	<b>Bruce Fredericks</b>

ENJOY MAKEFIELD'S OWN PUT ME DOWN FOR A FIVE BLONDE ALE



**Friday Nights are reserved for the Woodside Smokehouse Grille!  
Come by and try our famous smoked meat selection!**

MAKEFIELD HIGHLANDS • 1418 WOODSIDE ROAD • YARDLEY, PA • 215.321.7000



## TOWNSHIP OWNED RECREATIONAL FACILITIES

Lower Makefield Township Parks and Recreation is looking for craft vendors for our Holiday Craft Fair/Fun Night on Saturday, December 3, 2022, at the Lower Makefield Township Community Center. Vendor Fee -- \$50.00. Make check payable to LMT.

For more information, please contact Kathy Howell 267-274-1105 or kathyh@lmt.org.

### TOWNSHIP OWNED RECREATIONAL FACILITIES

#### **Community Park 32.7 Acres, 1050 Edgewood Rd**

- Pool Complex w/Parking
  - Dedicated 1981
  - Paved Parking, 2 lots with 130 spots each, gravel parking is also available.
  - Olympic Sized Community Pool (lighted), diving area, intermediate and tot sized pools, snack bar, dual slides, diving boards, all pools are heated.
  - Pool Pavilions is available for members to reserve
- Kids Kingdom Playground
  - Dedicated in 1992
  - Pavilion is available for Residents to reserve for parties
- Tennis Courts & Basketball Complex
  - 4 lighted community tennis courts
  - 1 lighted basketball court
- Community Softball Field (lighted)
- Nature Trail
- 260 Parking spaces
- Picnic area with restroom facility and pavilion

**Leagues: Home of the LMT Swim and Dive Team; Home of PAA**

#### **Lower Makefield Township Athletic Complex 36.75 Acres, 1103 Edgewood Rd**

- Greg Caiola Baseball Park
- Convertible 50/70 field
- Convertible to 40/60 field
- 145 parking spaces plus additional gravel parking available
- Robert P. Stoddard Sports Complex
- 3, 60' foot fields
- Concession Stand
- 2 Sand Volleyball Courts

**Leagues: Home of PAA Baseball**

#### **Fred Allan Softball Complex 23 Acres, 1500 Oxford Valley Rd**

- Dedicated in 1999
- 3 softball fields, dugouts, water on 3 fields, electric on 2 fields
- Batting Cage
- 2 All-weather Bocce Courts
- Tot play pieces

- Picnic area with concession stand
- Restroom facility and covered pavilion with a floor
- Walking trail/bike path
- Approximately 120 paved parking spots
- Underdrains installed on all three fields in 2014

#### **Macclesfield Park 91.9 Acres, 1000 River Rd**

- Front 60 acres dedicated 1989, rear 30 acres dedicated in 1997
- 8 full size multi-purpose fields (6 lighted) for use as regulation soccer football and baseball fields, including one all-weather turf field installed by YMS.
- 2, 90' lighted baseball fields
- 1, 75' lighted baseball field
- 4 sand volleyball courts
- 2 mid-sized soccer fields
- 5 mini soccer fields
- Tot lot play area
- Bike path and exercise stations
- Picnic areas and restrooms
- 2 pavilions, a concession stand, maintenance garage
- Access to the canal towpath
- Approximately 600 parking spaces, paved
  - 400 front lot
  - 200 rear lot

**Leagues: Home of the Yardley Makefield Soccer, Lower Makefield Football Association, and Pennsbury Athletic Association**

#### **Memorial Park 63.5 Acres, 1950 Woodside Rd**

- Purchased 1996
- 9/11 Garden of Reflection
- 2 basketball courts
- 2 sand volleyball courts
- Community Garden Plots
- Restrooms with a covered patio
- 1 skinned softball field
- Secret Garden inclusive playground with ADA parking lot
- Multipurpose field with field goals
- Gaga court
- Pavilion available to rent for LMT Residents

- 1k loop for walking
- 4 Pickleball Courts
- 3 Tennis Courts

**Five Mile Woods 298 Acres, 1305 Big Oak Rd.**

- Purchased in 1979
- Nature center
- Ranger office
- Manor house
- 5 miles of nature trails
- Handicap accessible
- Gravel parking for 50 vehicles

**LMT Bike Paths 25 Miles**

**Dog Park 3.5 Acres, 1950 Covington Rd**

- Opened June 12, 2018
- Dedicated July 15, 2018
- Maintenance shed
- Real-time scan system
- Cameras
- Multi use water fountain
- 10 Benches
- 10 waste stations
- 2 large trash cans

**Community Center 12 Acres, 1550 Oxford Valley Rd**

- Opened January 16, 2018 - Dedicated March 12, 2018
- Large multi-purpose room
- 2 Classrooms
- Parks and Recreation Offices
- Small industrial kitchen
- 5,235 square-foot space
- Home of the Lower Makefield Township Seniors
- Home of the Newtown Quilters Guild
- Space available for scheduled programs, scheduled classes, senior programs, camps and lectures

**Veterans Square 2.8 Acres, 1660 Edgewood Rd**

- Veterans Square Monument
- Tot lot play area
- Picnic area with benches
- Gravel Parking area for 50 cars
- Water fountain

**Heacock Meadows**

**8.2 Acres, Heacock/Bluebird/Covington**

- 4.5 Acres of Heacock Meadows Pocket Parks
- Dedicated 1979
- 1 Tot lot
- Basketball Court
- Tennis Court
- 4 Pickleball courts with portable nets

*Home of Lower Makefield Township Pickleball Meetup*

**Peake Farm**

**1.69 Acres, Twig Lane**

- Tot lot playground

**Yardley Hunt 3.1 Acres, Revere/Schulyer**

- Schulyer Drive: 4 dedicated tennis courts
- Revere: 3 tennis/ pickle ball courts
- Paved parking areas approximately 12 vehicles at each location

*League: Home of Yardley Makefield Tennis*

**Additional Township Owned Parks and Recreation Property**

**Makefield Highlands Golf Course**

**195 Acres, 1418 Woodside Rd**

- 18 Hole Golf Course
- Driving Range
- Restaurant
- Outdoor Patio
- Managed by Spirit Golf

**RECREATIONAL OPPORTUNITIES**

*A wide range of community sports organizations offer Lower Makefield Township residents' recreational opportunities on a year-round basis. Many of these groups are run entirely by volunteers.*

**For more information, contact the Lower Makefield Township Park & Recreation Office: 267-274-1110.**

**BASEBALL, SOFTBALL & T-BALL**

**Pennsbury Athletic Association (PAA)**

*T-ball, softball, baseball; age 4 to 18*

P.O. Box 297

Yardley, PA 19067

215-736-9550

<http://www.paaball.com>

**Morrisville Little League (MLL)**

*M/F, baseball/softball, ages 4 to 16*

P.O. Box 255

Morrisville, PA 19067

[morrisvillelittleleague@gmail.com](mailto:morrisvillelittleleague@gmail.com)

**Lower Bucks Softball Association**

*Adult softball league*

Pennsbury school district locations

215-750-1109

**BASKETBALL**

**Pennsbury Regional Basketball League (PRBL)**

*Male/Female Grades K to 11, Travel and instructional*

[www.prbl.org](http://www.prbl.org)

**Lady Falcons Elite Hoops**

*Female, grades 2 to 12; biddy ball. Developmental league with travel and in-house programs*

[ladyfalconselitehoops@gmail.com](mailto:ladyfalconselitehoops@gmail.com)

[www.leaguelineup.com/welcome.asp?url=lfehoops](http://www.leaguelineup.com/welcome.asp?url=lfehoops)

**Falcons Elite Hoops**

Male - K to 12 developmental organization. Offering opportunities for all skill levels to play in either in house and/or travel leagues. Also offering skill-based training for individuals and teams.

[falconselitehoops@gmail.com](mailto:falconselitehoops@gmail.com)

<http://www.falconselitehoops.com/>

**CAMPS & ENRICHMENT PROGRAMS**

**Bucks County Community College**

Male/Female, ages 4 to adult. Various enrichment programs/camps.

275 Swamp Road

Newtown, PA 18940

215-968-8409

[www.bucks.edu/kidsoncampus](http://www.bucks.edu/kidsoncampus)

**Bucks County Parks & Recreation**

Male/Female, ages 4 to adult. Various programs.

901 E. Bridgetown Pike

Langhorne, PA 19047

215-757-0571

**Pennsbury School District**

Community Services

School district locations

Adult Programs

215-428-4100

**FITNESS**

**YMCA – Morrisville & Fairless Hills**

Roller hockey, various programs

100 North Pennsylvania

Morrisville, PA 19067

215-736-8077 or 215-949-3400

**Newtown Athletic Club**

Various indoor sports programs; M/F

215-968-0600

Rt. 413 & Penns Trail

Newtown, PA 18940

**FOOTBALL**

**Lower Makefield Football Association (LMFA)**

Ages vary, flag/tackle

P.O. Box 401

Yardley, PA 19067

[info@lmfafootball.org](mailto:info@lmfafootball.org)

**CHEERLEADING**

**Pennsbury Falcons Cheerleading Association**

Sideline and competition cheerleading.

<https://www.pfcacheerleading.com/home>

**LACROSSE**

**Lower Bucks Lacrosse League (LBLL)**

Lacrosse, instructional & travel. Male/Female, Grades 3 to 8

P.O. Box 861

Yardley, PA 19067

215-914-1100 Ext.4653

<http://lowerbucks lacrosse.org/>

**RUGBY**

**Yardley Makefield Rookie Rugby - USA**

Coed Clinics grades K-4; Coed Clinics and Games grades 4-8; Summer (Local Clinics & Travel Tournaments) & Fall (Local Clinics & Local Games) Seasons

215-495-7773

[ymrookierugby@gmail.com](mailto:ymrookierugby@gmail.com)

[www.yardleyrugby.com](http://www.yardleyrugby.com)

**SOCCER**

**Yardley Makefield Soccer (YMS)**

M/F Ages 4 – Adult; Travel & Intramural

P.O. Box 925

Morrisville, PA 19067

<http://www.ymsoccer.net>

**SWIM & DIVE**

**The Pool at LMT – Swim & Dive Team and Program**

Male/female, Ages, 6 – 18. Competitive, recreational, and dive options

Contact through website:

[www.lmtswim.com](http://www.lmtswim.com)

**Penn Aquatics**

Male/female all ages; program at Pennsbury High School field house on Hood Blvd. in Fairless Hills, PA

[pennregistrar@pennaquatics.com](mailto:pennregistrar@pennaquatics.com)

[www.pennaquatics.com](http://www.pennaquatics.com)

**TENNIS**

**Yardley Makefield Tennis**

Male/Female, ages vary; clinics, camps, lessons

683 Friar Drive

Yardley, PA 19067

215-295-0558

[www.YMTennis.com](http://www.YMTennis.com)

**Pennsbury Racquet Club**

Indoor tennis courts, multi-purpose sports room, fitness facility, camps

375 West Trenton Avenue

Morrisville, PA 19067

215-736-0248

[www.pennsburyrac.com](http://www.pennsburyrac.com)

**Bucks County Racquet Club**

Indoor tennis courts, outdoor Har-Tru courts, clinics, camps, lessons, & leagues

1150 Lord Sterling Road

Washington Crossing, PA 18977

215.493.5666

[www.buckscountyracquetclub.com](http://www.buckscountyracquetclub.com)

**PICKLEBALL**

**Lower Makefield Township Pickleball Meetup**

Recreation Club

<https://www.meetup.com/Morrisville-Playing-Pickleball-Meetup/>

[prininfo@lmt.org](mailto:prininfo@lmt.org)



it's  
*Get-Together Season!*

Small private party? Special birthday dinner? Additional appetizers, sides &/or entrées? You gather the excellent people; we'll prepare the exceptional food. Our chefs always prepare your dishes with high-quality ingredients, locally sourced whenever possible. No matter what type of event you're planning, there's one thing you can do to help make it a success: McCaffrey's Full-Service Catering!



*Check out our Catering  
& Holiday Menus*



*Yardley:* 635 Heacock Road • (215) 493-9616 • [mccaffreys.com](http://mccaffreys.com)



FALL 2022



This Community Newsletter is produced for  
LOWER MAKEFIELD TOWNSHIP by Hometown Press  
(215) 257-1500 • All rights reserved®

To Place An Ad Call or Email Peggy Kucipak at Hometown Press • 215-262-3617 ♦ [peggy.cbn@gmail.com](mailto:peggy.cbn@gmail.com)

## NEED TO SELL YOUR HOME? Here's What Your Neighbors Are Saying About Realtor Hazel Smith...



Carol and Rob Weissberg  
with their Realtor, Hazel Smith



Hazel is a fabulous Realtor! We highly recommend her. Hazel helped us with all stages of selling our home – and buying our new home, as well.

From coordinating repairs and staging – so that our home stood out from the competition – to guidance with packers and movers, and most importantly, the invaluable “hand-holding” and positive emotional support at every step of the way, we just cannot thank Hazel enough.

Hazel really made the process easy and seamless.

**We are so grateful that we chose Hazel Smith as our Realtor.**

– Carol and Rob Weissberg



**Your Home is in Demand –  
Contact Hazel Today: 215-696-2018**

From getting your home ready for a timely sale at full market value, to closing (and all the details in-between), call **215-696-2018** today!



**Hazel Smith**  
REALTOR®  
*Your Trusted Real Estate Advisor*

**I've SOLD More than 500 Homes**  
Direct: 215-696-2018  
[Hazel@ListWithHazel.com](mailto:Hazel@ListWithHazel.com)  
[www.ListWithHazel.com](http://www.ListWithHazel.com)



If your home is currently listed with another real estate broker, please disregard this solicitation. Each Office Independently Owned and Operated.