

Lest We Forget

The Lower Makefield Township
Veterans Monument





Existing Site



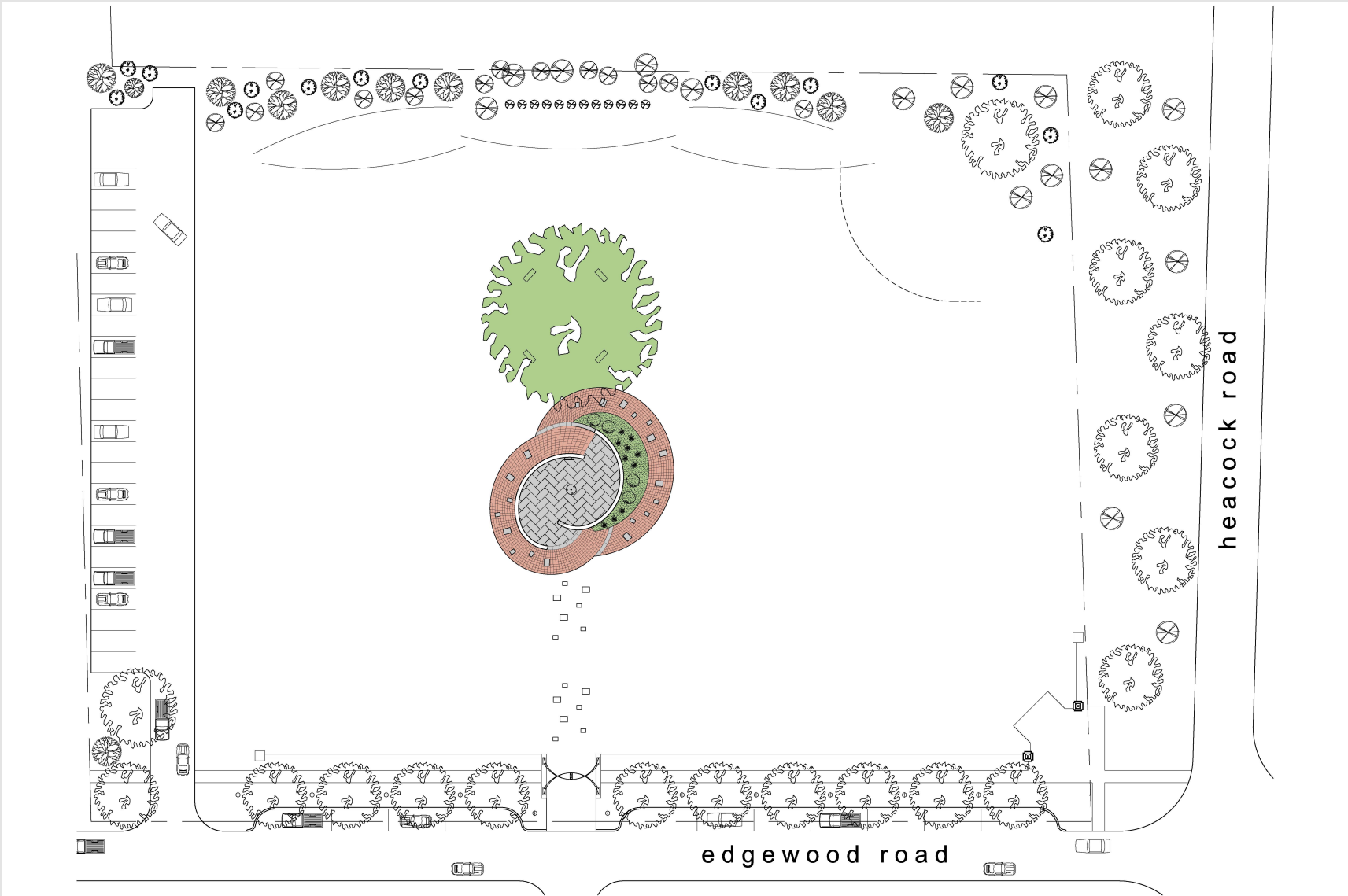
Park Master Plan

Major Elements of Park

- Designed to Maintain Existing Uses and Accept New Uses Including:
 - School Trips, Music and Theater, Holiday Gatherings
- Parking Lot
- Formal Edge Along Edgewood Road Featuring:
 - Potential for On Street Parking
 - Bike Path
 - Colonnade of Specimen Trees
 - Low Wall and Fence-Line to Demarcate Park Boundary
 - Entrances at Center and Corners
- Formally Landscaped Berm Along Rear to screen CVS

Major Elements of Park

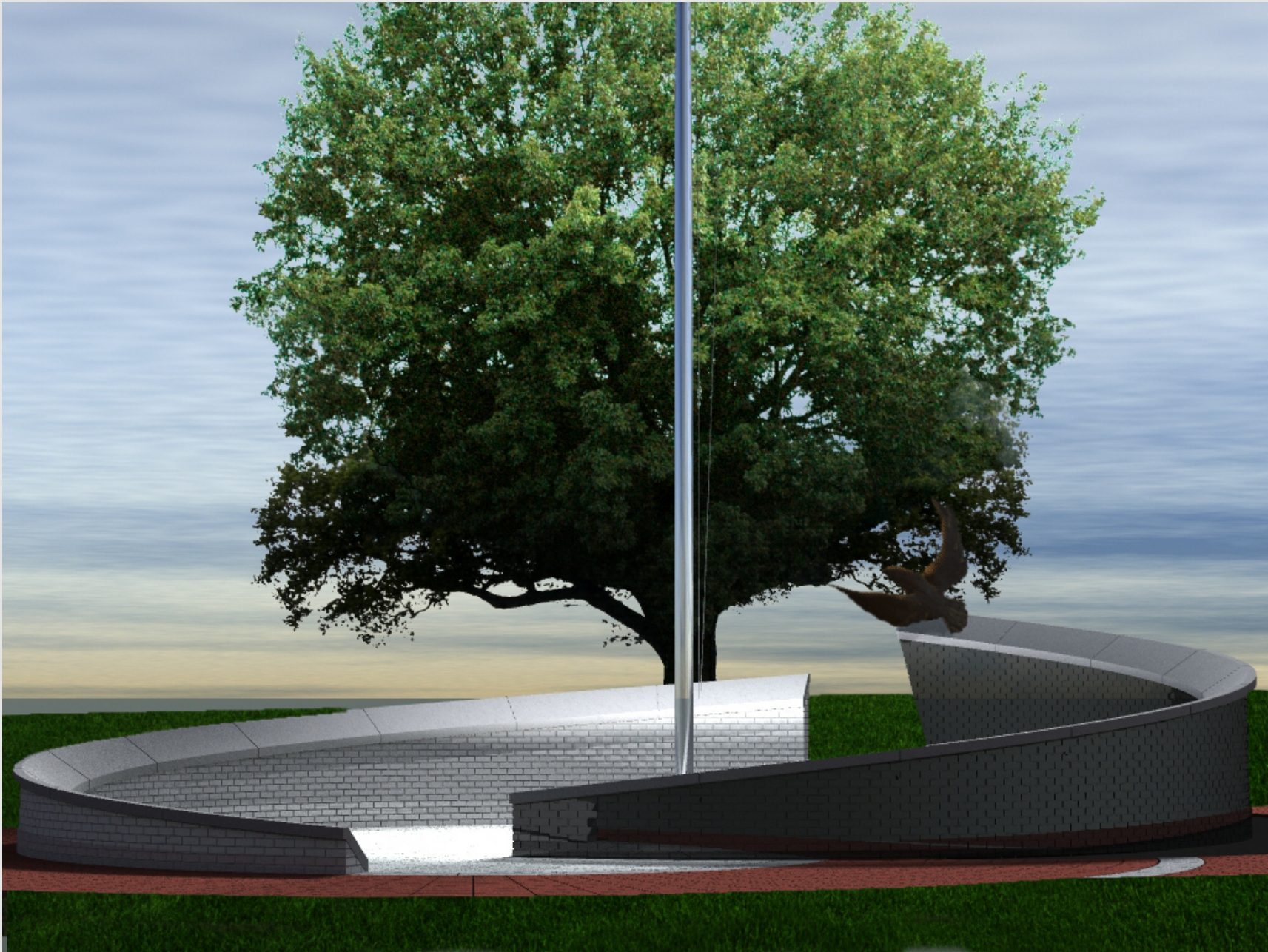
- Possible Presentation Area at Northeast Corner
- Possible Playground (natural and sculpted)
- Internal Pathways
- Gathering Area Below Central Oak
- Natural Edge Along Heacock Road
- Monument



Monument's Place

The Monument's Place

- On Axis with the Great Oak
 - Allows for Gentle Flow to the Contemplative Gathering Area Beneath the Oak
 - Layers Vertically from Street to Flagpole to Tree to Formal Screening Berm along the Rear (CVS) Edge
- Visible from Both Streets
- Accessible from Parking and Procession and Corners



Features of the Monument

- Form Inspired by the Soaring Flight of the Eagle
- Timeless
 - Not for any Particular War or Conflict
 - Not of Any Particular Historical Period
- Echoes the Form of the Oak Tree
 - Engages All Edges of the Surrounding Landscape
 - Anchors the Park
 - Beckoning and yet Embracing



Features of the Monument

– Enduring

- **Constructed of Durable Natural Materials and Landscape**
- **Approximate Cost: \$350,000**

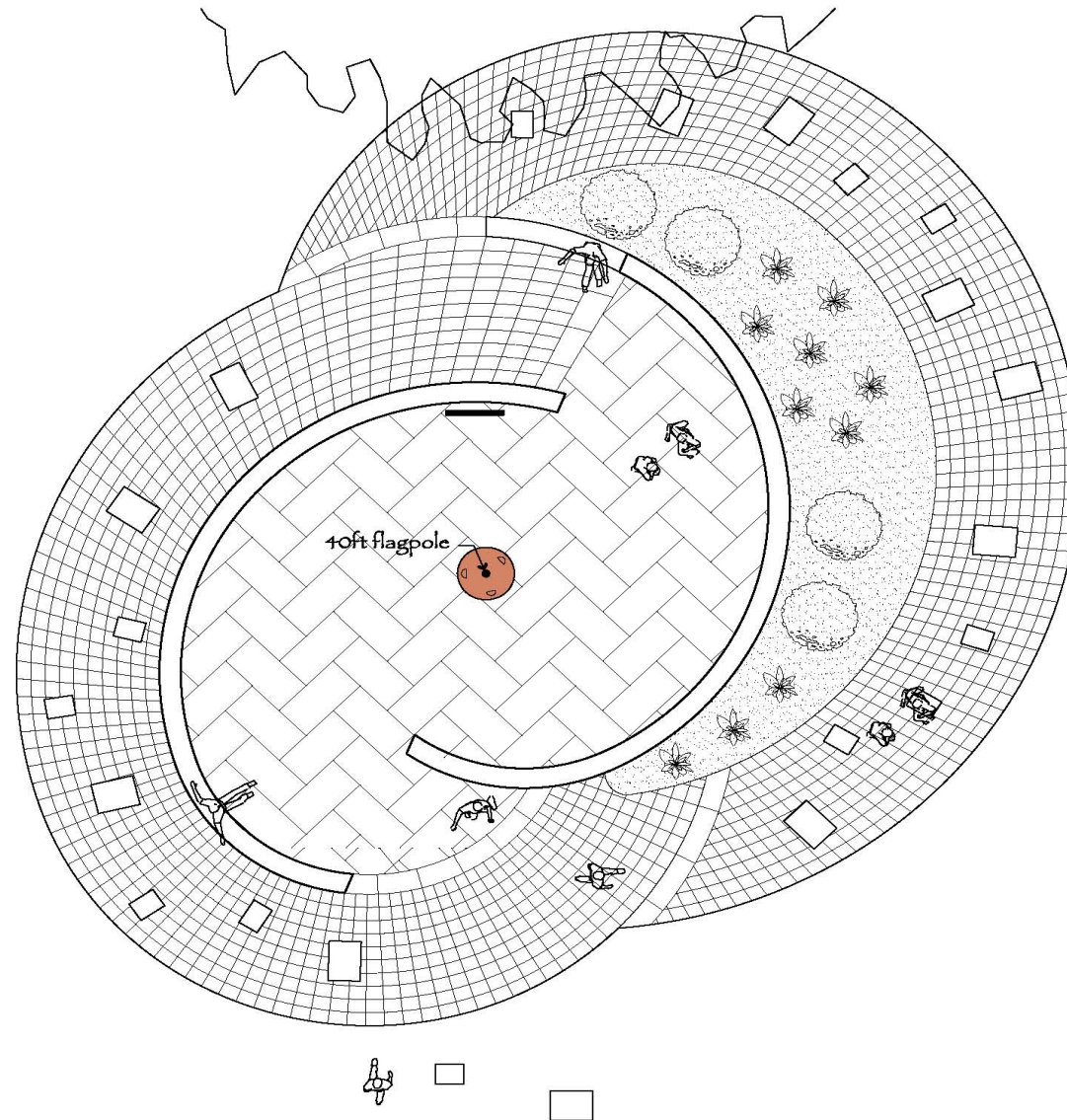
– Inspiring

- **Civic Wall Inscribed with Quote or Motto**
- **Civic Wall Features the Revived Woodside Honor Roll**
- **Name Dedication Wall Honors those who made the Ultimate Sacrifice**

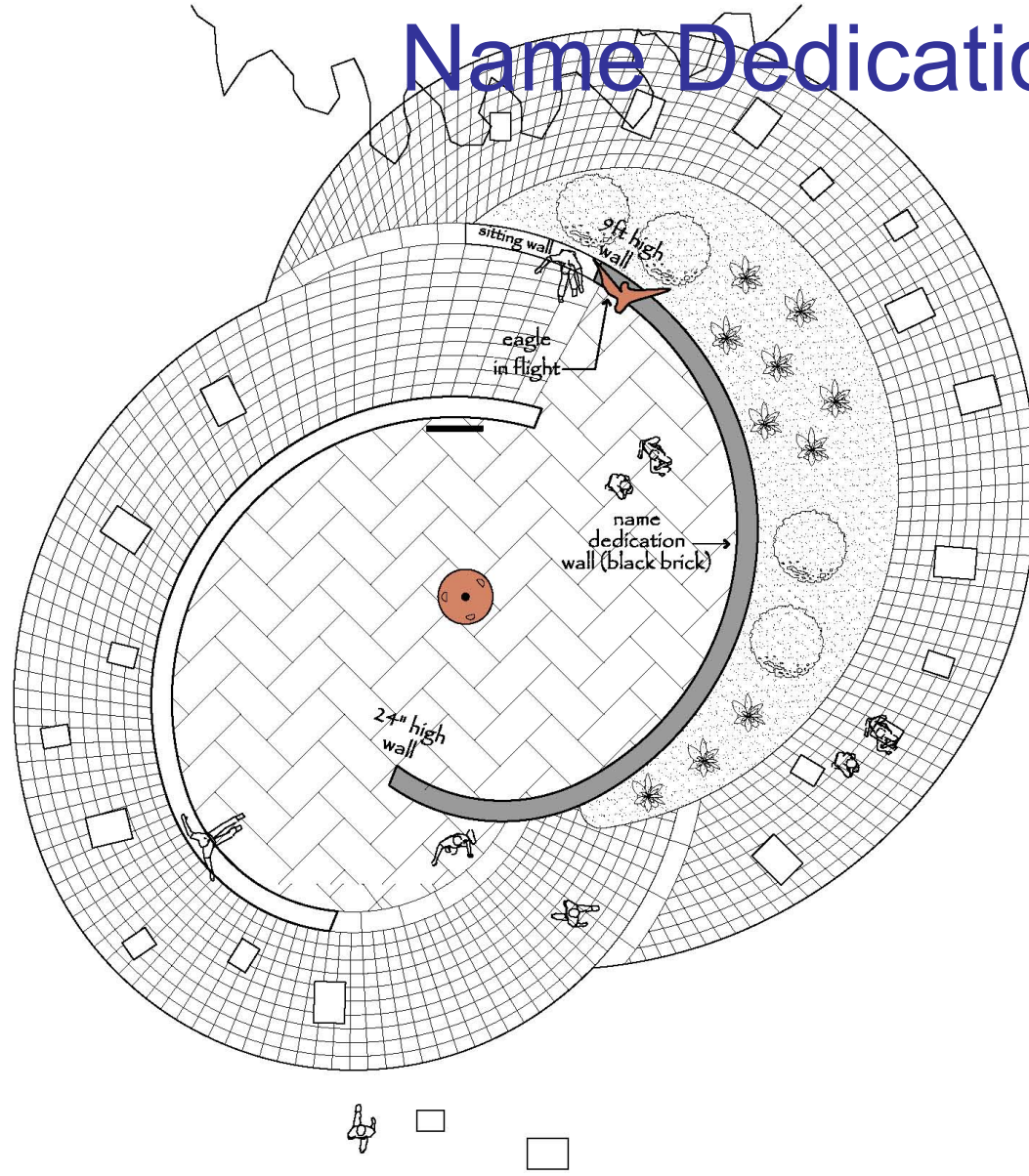
– Community Involving

- **Exterior Path Pavers Available for Donation**

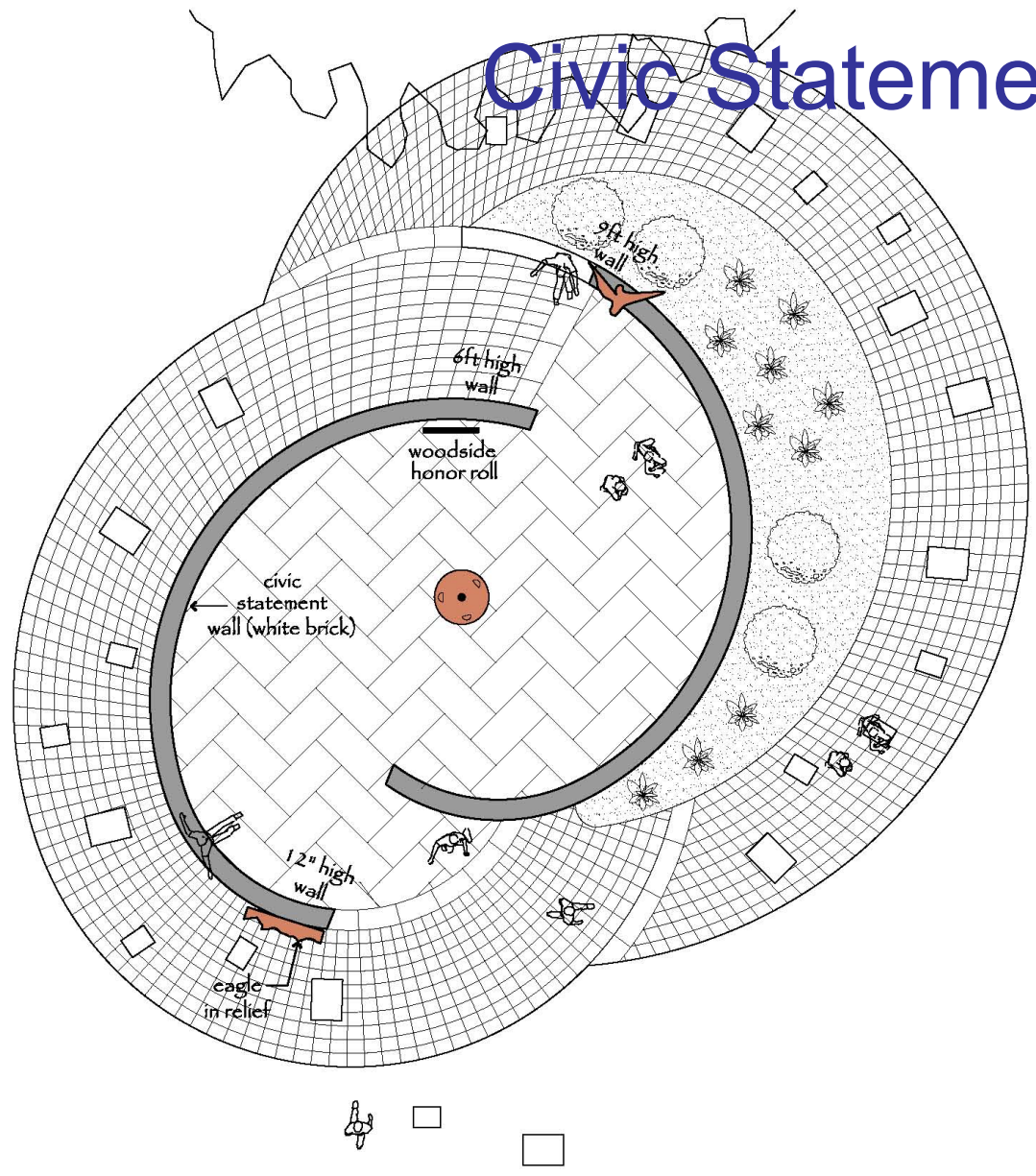
Flagpole



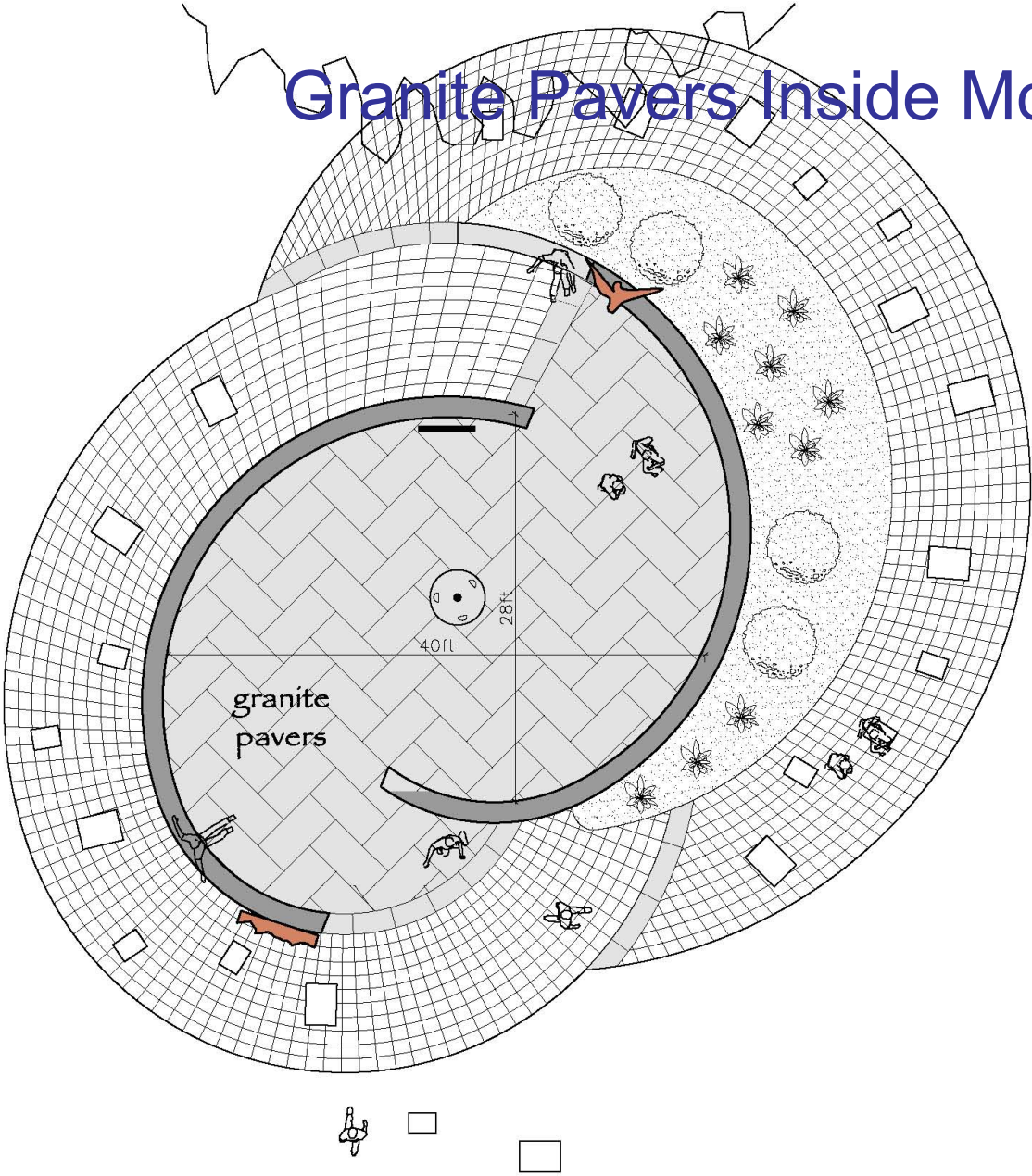
Name Dedication Wall



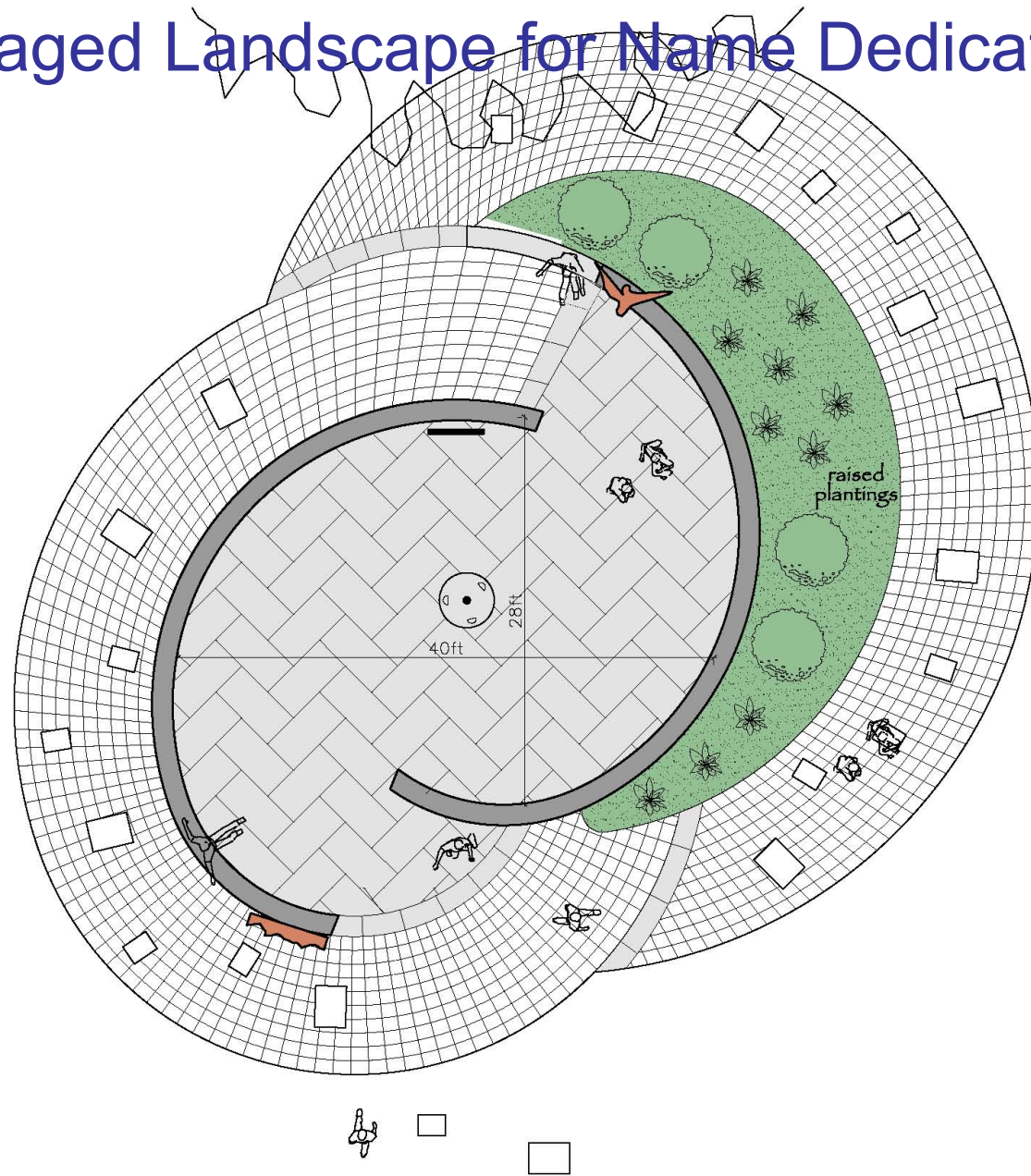
Civic Statement Wall



Granite Pavers Inside Monument



Engaged Landscape for Name Dedication Wall



Brick Pavers Outside the Walls

